



**Spread Spectrum
Wireless Data Transceiver
User Manual
Version 6.3**

FreeWave Technologies, Inc.
1880 South Flatiron Court
Boulder, CO 80301
(303) 444-3862
(303) 786-9948 Fax
www.FreeWave.com

SPREAD SPECTRUM WIRELESS DATA TRANSCEIVER USER MANUAL

Copyright © 1995-2008 by FreeWave Technologies, Inc. All rights reserved. Published 2008.

WARRANTY

FreeWave Technologies warrants the FreeWave Wireless Data Transceiver against defects in materials and manufacturing for a period of two years from the date of purchase. In the event of a Product failure due to materials or workmanship, FreeWave will, at its discretion, repair or replace the Product.

In no event will FreeWave Technologies Inc., its suppliers, and its licensors be liable for any damages arising from the use of or inability to use this Product. This includes business interruption, loss of business information, or other loss which may arise from the use of this Product. Please be advised that OEM customer's warranty periods may vary.

Warranty Policy may **not apply**:

1. If Product repair, adjustments or parts replacements is required due to accident, neglect, unusual physical, electrical or electromagnetic stress.
2. If Product is used outside of FreeWave specifications.
3. If Product has been modified, repaired or altered by Customer unless FreeWave specifically authorized such alterations in each instance in writing. This includes the addition of conformal coating.

The Warranty period begins from the date of shipment and is defined per the Standard Warranty Policy stated above.

Special Rate Replacement Option

A special rate replacement option is offered to non-warranty returns or upgrades. The option to purchase the replacement unit at this special rate is only valid for that RMA, (Return Material Authorization). The special replacement rate option expires if not exercised within 30 days of final disposition of RMA.

RESTRICTED RIGHTS

Windows and Windows XP are registered trademarks of the Microsoft Corporation. Other product names mentioned in this manual may be copyrights, trademarks, or registered trademarks of their respective companies and are hereby acknowledged.

Information in this document is subject to change without notice. The information contained in this document is proprietary and confidential to FreeWave Technologies, Inc.

This manual is for use by purchasers and other authorized users of the FreeWave Spread Spectrum Wireless Data Transceiver only.

No part of this document may be reproduced or transmitted in any form or by any means, electronic or mechanical, or for any purpose without the express written permission of FreeWave Technologies, Inc.

FreeWave's Spread Spectrum Wireless Data Transceivers are designed and manufactured in the United States of America.

Printed in the United States of America.

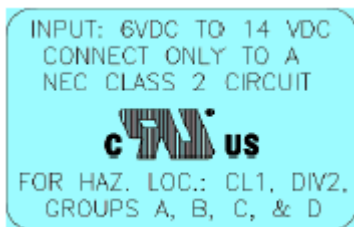
This product is licensed by The United States. Diversion contrary to U.S. law is prohibited. Shipment or re-export of this product outside of The United States may require authorization by the U.S. Bureau of Export Administration. Please contact FreeWave Technologies for assistance and further information.

UL NOTIFICATION

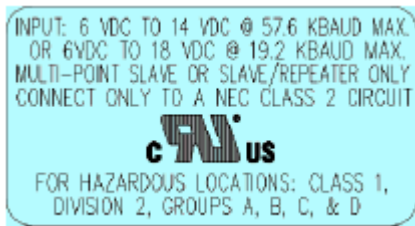
Model# FGRO9CSU is suitable for use in Class 1, Division 2, Groups A, B, C, and D or non-hazardous locations only. Input voltage for Model# FGRO9CSU is 6 to 30 volts DC.

Model# DGRO9RFS is suitable for use in Class 1, Division 2, Groups A, B, C, and D or non-hazardous locations only.

Input voltages for Model# DGRO9RFS are determined by the label on the bottom of the board. If the board has Label A shown below, the input voltage is 6 to 14 volts DC.



If the board has Label B shown below the input voltage is 6 to 14 volts DC at a maximum baud rate of 57.6 Kbaud or 6 to 18 volts DC at a maximum baud rate of 19.2 Kbaud, operation mode of MultiPoint Slave or MultiPoint Slave/Repeater only.



FCC NOTIFICATIONS

This device complies with part 15 of the FCC rules. Operation is subject to the following two conditions: 1) This device may not cause harmful interference and 2) this device must accept any interference received, including interference that may cause undesired operation. This device must be operated as supplied by FreeWave Technologies, Inc. Any changes or modifications made to the device without the express written approval of FreeWave Technologies may void the user's authority to operate the device.

CAUTION: The model number FGR09 has a maximum transmitted output power of 955mW. It is recommended that the transmit antenna be kept at least 23 cm away from nearby persons to satisfy FCC RF exposure requirements.

The "I"-series transceiver have maximum transmitted output power of 500mW. It is recommended that the transmit antenna be kept at least 23 cm away from nearby persons to satisfy FCC RF exposure requirements.

This equipment has been tested and found to comply with the limits for a Class B digital device, pursuant to part 15 of the FCC Rules. These limits are designed to provide reasonable protection against harmful interference in a residential installation. This equipment generates, uses, and can radiate radio frequency energy and, if not installed and used in accordance with the instructions, may cause harmful interference to radio communications. However, no guarantee shall be made that interference will not occur in a particular installation. If this equipment does cause harmful interference to radio or television reception, which can be determined by turning the equipment off and on, the user is encouraged to try to correct the interference by one or more of the following measures:

- Reorient or relocate the receiving antenna.
- Increase the separation between the equipment and receiver.
- Connect the equipment into an outlet on a circuit different from that to which the receiver is connected.
- Consult the dealer or an experienced radio/TV technician for help.

Note: Whenever any FreeWave Technologies module is placed inside an enclosure a label **must** be placed on the outside of that enclosure which includes the module's FCC ID.

Table of Contents

TABLE OF CONTENTS	V
ABOUT FREEWAVE TRANSCEIVERS	7
CHOOSING POINT-TO-POINT OR POINT-TO-MULTIPOINT OPERATION	8
QUICK START ON A POINT-TO-MULTIPOINT NETWORK	9
POINT-TO-MULTIPOINT OPERATION LED'S.	9
QUICK START ON A POINT-TO-POINT NETWORK	10
POINT-TO-POINT OPERATION LED'S.....	10
CHOOSING A LOCATION FOR THE TRANSCEIVERS	11
SETTING UP THE TRANSCEIVER USING HYPERTERMINAL	12
ACCESSING HYPERTERMINAL'S SETUP MENU	12
CONNECTING AND DISCONNECTING FROM HYPERTERMINAL.....	16
TROUBLESHOOTING HYPERTERMINAL	17
SETTING UP A TRANSCEIVER	18
OPERATION MODE.....	18
SET OPERATION MODE.....	20
<i>Using the Point-to-Point Slave/Master Switchable Operation Mode (Mode 6)</i>	20
<i>Script File or AT commands</i>	21
BAUD RATE.....	24
SET BAUD RATE.....	24
CALL BOOK.....	27
EDIT CALL BOOK	27
<i>Programming Point-to-Point Extended Call Book to Use Three or Four Repeaters</i>	28
<i>Programming Point-to-MultiPoint Call Book</i>	29
<i>Programming Point-to-MultiPoint Extended Call Book</i>	29
RADIO TRANSMISSION CHARACTERISTICS	30
EDIT RADIO TRANSMISSION CHARACTERISTICS	30
<i>FreqKey in 900 MHz Transceivers</i>	30
(0) Hop Table Version	31
(1) Hop Table Size	31
(2) Hop Freq Offset	31
(3) Frequency Zone.....	32
<i>FreqKey in 2.4 GHz Transceivers</i>	34
(0) Hop Table Version	34
(1) Hop Table Size	34
(2) Hop Freq Offset	34
(3) Frequency Zone.....	35
(4) Government Rules.....	35
(1) Max Packet Size and (2) Min Packet Size	36
(3) Xmit Rate.....	37
(4) RF Data Rate	37
(5) RF Xmit Power.....	37
(6) Slave Security.....	38
(7) RTS to CTS.....	38
(8) Retry Time Out.....	39
(9) Lowpower Mode.....	39
(A) High Noise.....	40
(B) MCU speed.....	40

(C) Remote LED	40
SHOW RADIO STATISTICS	41
Number of Disconnects	41
Antenna Reflected Power	41
Transmit Current (mA)	41
Average Noise Level	42
Average Signal Level	42
Overall Rcv Rate (%)	42
Radio Temperature	42
MULTIPOINT PARAMETERS	42
EDIT MULTIPOINT PARAMETERS	42
(0) Number Repeaters	43
(1) Master Packet Repeat	43
(2) Max Slave Retry	44
(3) Retry Odds	44
(4) DTR Connect	44
(5) Repeater Frequency	44
(6) Network ID	44
(8) MultiMaster Synch	45
(9) 1 PPS Enable/Delay	45
(A) Slave/Repeater	45
(B) Diagnostics	45
(C) Subnet ID	46
(D) Radio ID	47
(E) Local Access	47
(G) Radio Name	47
OVERLAPPING MULTIPOINT NETWORKS	47
PASSWORDS	49
SETTING A PASSWORD	49
Changing a Password	49
Disabling a Password	49
TIME DIVISIBLE MULTIPLE ACCESS (TDMA)	49
ADDITIONAL SETTINGS	50
LOW BAUD RATES	50
SETUP TIMEOUT	50
FACTORY DEFAULT SETTINGS.....	51
EXAMPLES OF DATA COMMUNICATION LINKS	52
ADDITIONAL TRANSCEIVER INFORMATION.....	55
OPERATIONAL RS-422 AND RS-485 INFORMATION	55
RS-485 Half Duplex Pin-Outs	56
RS-422 and RS-485 Full Duplex Pin-Outs Waterproof Enclosure	56
RS-485 Half Duplex Pin-Outs	56
RS232 PIN ASSIGNMENTS	56
FGRO RF BOARD PINOUT	57
FGR-115WC WATERPROOF ENCLOSURE PIN OUT FOR CABLE ASC0613WW	58
900 MHz TRANSCEIVER SPECIFICATIONS	59
2.4 GHz TRANSCEIVER SPECIFICATIONS	61
OEM FULL SIZE BOARD LEVEL MECHANICAL DRAWING	63
OEM MINI- BOARD LEVEL MECHANICAL DRAWING	64
FGR ERRATA DATA.....	65
FREEWAVE TECHNICAL SUPPORT	65

About FreeWave Transceivers



FreeWave transceivers operate in virtually any environment where RS232 data communications occur. A pair of transceivers functions as a 9-pin null modem cable. If the FreeWave transceivers are to be used in an application where a null modem cable is used, such as communication between two computers, then the FreeWave transceivers can be connected directly. If FreeWave transceivers are to be used to replace a straight-through RS232 cable, then a null modem cable must be placed between the transceiver and the DTE instrument to which it is connected.

Choosing Point-to-Point or Point-to-MultiPoint Operation

A Point-to-Point network is limited to one Master and one Slave transceiver. Up to 4 Repeaters may be added to extend the reach of the network, but no other Master or Slave may be added.

In a Point-to-MultiPoint network (also referred to as MultiPoint network) the transceiver, designated as a Master, is able to simultaneously communicate with numerous Slaves. In its simplest form, a MultiPoint network functions with the Master broadcasting its messages to all Slaves and the Slaves responding to the Master when given data by the device connected to the data port.

It is important to note the differences between Point-to-Point and MultiPoint networks. In a Point-to-Point network all packets are acknowledged, whether sent from the Master to the Slave or from the Slave to the Master. In a MultiPoint network, outbound packets from the Master or Repeater to Slaves or other Repeaters are sent a set number of times determined by the user. The receiving transceiver, Slave or Repeater, will accept the first packet received that passes the 32 bit CRC. However, the packet is not acknowledged. On the return trip to the Master, all packets sent are acknowledged or retransmitted until they are acknowledged. Therefore, the return link in a MultiPoint network is generally very robust.

Traditionally, a MultiPoint network is used in applications where data is collected from many instruments and reported back to one central site. As such, the architecture of such a network is different from Point-to-Point applications. The number of radios in a MultiPoint network is influenced by the following parameters:

1. Size of the blocks of data. The longer the data blocks, the smaller the network capacity.
2. Baud rate.
3. The amount of contention between Slaves. Polled Slaves vs. timed Slaves.
4. Use of Repeaters. Using the Repeater setting in a MultiPoint network will decrease overall network capacity by 50%.

For example, if the network will be polling Slaves once a day to retrieve sparse data, several hundred Slaves could be configured to a single Master. However, if each Slave will be transmitting data at greater levels, then fewer Slaves should be linked to the Master. The overall network will be closer to capacity with fewer Slaves.

For examples and additional information on data communication links, see the section Examples of Data Communication Links later in this document.

Quick Start on a Point-to-MultiPoint Network

The following is a quick start guide for setting up two transceivers in Point-to-MultiPoint mode. This mode allows for a Master to communicate with several Repeaters and Slaves simultaneously.

1. Connect the transceiver to the serial port of a computer either through a serial cable or via the diagnostics cable. Make sure to connect the radio to a power source (typically, 6 to 30 VDC).
 2. Open up a Hyper Terminal session.
 - Use the following settings in connecting with hyper terminal
 - Connect to COMx (where 'x' is the number of the Comm port being connected)
 - Set data rate to **19,200**, data bits - **8**, Parity- **none**, Stop bits – **1**, Flow control – **none**.
 3. Press the **Setup** button on the radio. If using the diagnostics cable, press *Shift-U* (capital U).
 - The three lights on the board should all turn green, indicating Setup mode.
 - The main menu will appear on the screen.
 4. Press **0** to get into the Operation Mode menu.
 - Press **2** to set the radio as a point to **MultiPoint Master**.
 - OR, Press **3** to set the radio as a point to **MultiPoint Slave**.
 - Press **Esc** to get back to Main menu.
 5. Press **1** in the main menu to change the Baud Rate.
 - The baud rate must be changed to match the baud rate of the device that the radio is to be attached to.
 - Press **Esc** to get back to Main menu.
 6. At the Main Menu, press **3**.
 - Set FreqKey, Max Packet Size, Min Packet Size, RF Data rate identical on all radios in the network.
- Note:** Changing these values may help to eliminate interference from other FreeWave networks.
- Press **Esc** to get back to Main menu.
7. At the Main Menu, press **5**.
 - Set the Network ID value to any value between 1 and 4095, except 255.
 - Make sure this value is the same on every radio in the network.

Point-to-MultiPoint Operation LED's.

Condition	Master			Slave			Repeater		
	Carrier Detect (CD)	Transmit (TX)	Clear to Send (CTS)	Carrier Detect (CD)	Transmit (TX)	Clear to Send (CTS)	Carrier Detect (CD)	Transmit (TX)	Clear to Send (CTS)
Powered, not linked	Solid red bright	Solid red dim	Off	Solid red bright	Off	Blinking red	Solid red bright	Off	Blinking red
Repeater and Slave linked to Master, no data	Solid red bright	Solid red dim	Off	Solid green	Off	* Solid red bright	Solid green	Solid red dim	* Solid red bright
Repeater and Slave linked to Master, Master sending data to Slave	Solid red bright	Solid red dim	Off	Solid green	Off	* Solid red bright	Solid green	Solid red dim	* Solid red bright
Repeater and Slave linked to Master, Slave sending data to Master	Solid green RCV data or Solid red bright	Solid red dim	Intermittent flash red	Solid green	Intermittent flash red	* Solid red bright	Solid green	Solid red bright	* Solid red bright
Master with diagnostics program running	Solid red bright	Solid red dim	Intermittent flash red	Solid green	Intermittent flash red	* Solid red bright	Solid green	Solid red bright	* Solid red bright

* Clear to Send LED will be solid red with a solid link, as the link weakens the Clear to Send LED light on the Repeater and Slave will begin to flash

Quick Start on a Point-to-Point Network

When purchased as a pair, the FreeWave® Wireless Data Transceivers are shipped from the factory pre-configured with most of the settings to operate in Point-to-Point applications. To establish communications between a pair of FreeWave Wireless Data Transceivers just received from the factory:

1. Connect the transceiver to the instrument with the RS232 cable and also attach power. The cable supplied with enclosed transceivers (except Waterproof) is a 9-pin male serial; professional board level transceivers will need a separate programming cable (sold separately).
2. Set the Modem mode in each transceiver. One should be set as a Point-to-Point Master (Mode 0) and the other set as a Point-to-Point Slave (Mode 1).
3. Set the baud rate on each transceiver to match the baud rate of the instrument to which it is attached. Please note, when setting the transceiver's baud rate, its RS232 data rate is set. The baud rate does not have to be on the same setting for the two transceivers.
4. Edit the Call Book. Enter the Slave serial number in the Master's Call Book. Enter the Master's Serial number in the Slave's Call Book, or disable Slave Security (in the Slave).
5. Connect antennas to the transceiver. Any FreeWave transceiver may be operated without an antenna for bench-top testing without concern for damaging the product. Noise potential may be reduced on the bench by lowering the Xmit power.
6. Shortly after both transceivers are plugged in, they should establish a communications link with each other and the connection is complete. Using the table below, verify that the radios are operating as expected.

Point-to-Point Operation LED's

Condition	Master			Slave			Repeater		
	Carrier Detect (CD)	Transmit (TX)	Clear to Send (CTS)	Carrier Detect (CD)	Transmit (TX)	Clear to Send (CTS)	Carrier Detect (CD)	Transmit (TX)	Clear to Send (CTS)
Powered, no link	Solid red bright	Solid red bright	Solid red bright	Solid red bright	Off	Blinking red	Solid red bright	Off	Blinking red
Linked, no Repeater, sending sparse data	Solid green	Intermittent flash red	Intermittent flash red	Solid green	Intermittent flash red	Intermittent flash red	n/a	n/a	n/a
Master calling Slave through Repeater	Solid red bright	Solid red dim	Solid red bright	Solid red bright	Off	Blinking red	Solid red bright	Off	Blinking red
Master linked to Repeater, not to Slave	Flashing orange	Solid red dim	Solid red bright	Solid red bright	Off	Blinking red	Solid red bright	Solid red dim	Solid red bright
Repeater linked to Slave	Solid green	Intermittent flash red	Intermittent flash red	Solid green	Intermittent flash red	Intermittent flash red	Solid green	Intermittent flash red	Intermittent flash red
Mode 6 - waiting for ATD command	Solid red bright	Off	Blinking red	Solid red bright	Off	Blinking red	n/a	n/a	n/a
Setup Mode	Solid green	Solid green	Solid green	Solid green	Solid green	Solid green	Solid green	Solid green	Solid green

Choosing a Location for the Transceivers

Placement of the FreeWave transceiver is likely to have a significant impact on its performance. The key to the overall robustness of the radio link is the height of the antenna. In general, FreeWave units with a higher antenna placement will have a better communication link. In practice, the transceiver should be placed away from computers, telephones, answering machines and other similar equipment. The 6-foot RS232 cable included with the transceiver usually provides ample distance for placement away from other equipment. To improve the data link, FreeWave Technologies offers directional and Omni directional antennas with cable lengths ranging from 3 to 200 feet. When using an external antenna, placement of that antenna is critical to a solid data link. Other antennas in close proximity are a potential source of interference; use the Point-to-Point diagnostics utility to align and tune antennas. Please reference the LAN5455AA Rev D Using Local Diagnostics from a Multipoint Slave.pdf file (found on the User Manual and System Tools CD) for proper usage of the utility. An adjustment as little as 2 feet in antenna placement can resolve some noise problems. In extreme cases, such as when interference is due to a Pager or Cellular Telephone tower, the band pass filters that FreeWave offers, may reduce this out-of-band noise.

FreeWave also offers a waterproof version of the several of our more popular transceivers. These models may be placed outdoors without additional weather protection. The waterproof enclosure requires an external antenna and includes a 6-foot data and power pigtail cable.

Setting up the Transceiver using HyperTerminal

Note: The terms Modem and Transceiver are used interchangeably in this manual and in the text of the Setup menu. While the words have different meanings, the two terms should be treated as one and the same when referring to FreeWave products.

Note: Included on the User Manual CD is the optional “EZConfig” transceiver setup program and instructions. This program eliminates the need to use HyperTerminal to program the transceivers.

Once the transceiver is powered and connected with a cable to the programming computer, it can be accessed for use through HyperTerminal or EZConfig.

The following describes how to set HyperTerminal to program the transceivers.

To use EZConfig to program a transceiver, reference LIT0005AG Rev B User Guide EZConfig V27.pdf (found on the User Manual and System Tools CD).

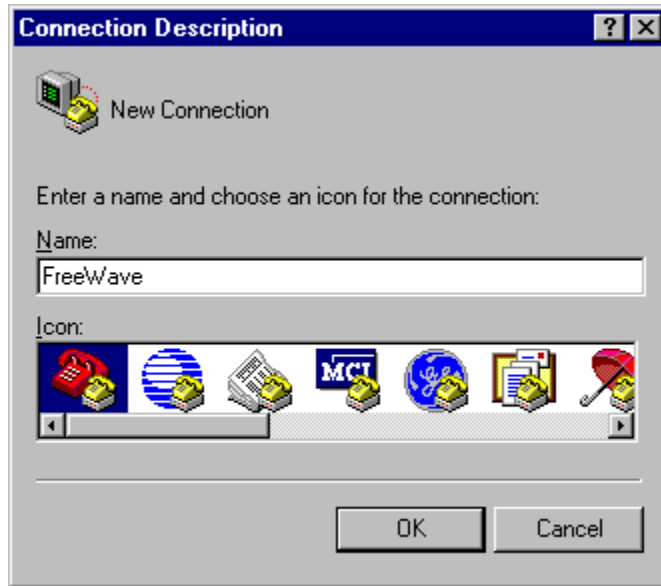
Accessing HyperTerminal's Setup Menu

Note: The following screen shots are taken from a computer using Windows XP. The display may vary slightly if using different operating systems.

1. Click on the **Start** button. A cascading menu appears. Select **Programs**, **Accessories**, **Communications** and then **HyperTerminal**. A window appears similar to the following:



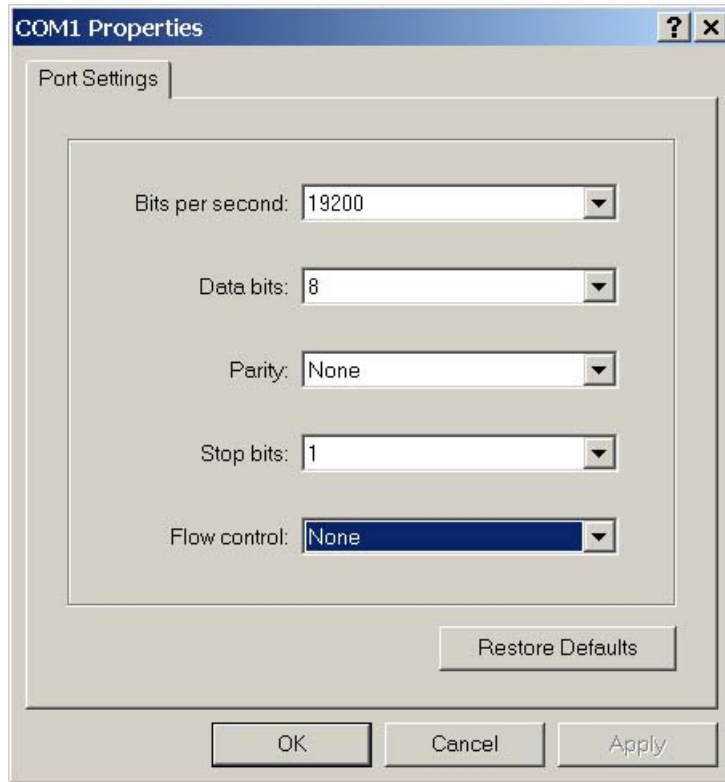
2. Double-click on the **Hypertrm.exe** icon. The following window appears.



3. In the Name text box, type in a descriptive name. Select an icon from the Icon selection box.
4. Click on the **OK** button. The following “Connect To” dialog box appears:



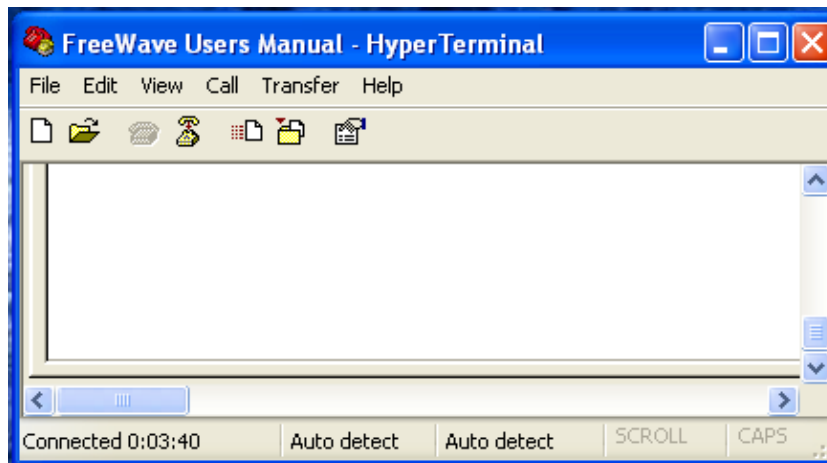
5. Select the connection type to be used from the **Connect using** drop-down menu. Select the active Comm Port that the radio is connected to.
6. Click on the **OK** button. The Properties dialog box appears for the selected connection type.



The following are the port settings which must be set for a proper connection:

Port Setting	Menu Option to Select
Bits per second	19200
Data bits	8
Parity	None
Stop bits	1
Flow control	None

- After selecting the appropriate menu items for each setting, click on the **OK** button. The following HyperTerminal dialog box appears:



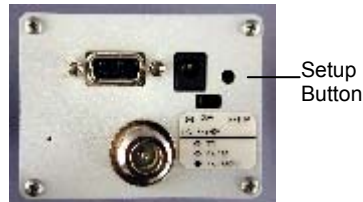
- Save the HyperTerminal connection settings by selecting **Save** from the File menu.

IMPORTANT NOTE: Whenever a change is made to the **HyperTerminal settings** in an open terminal session, the connection must be disconnected then reconnected before the settings will take effect.

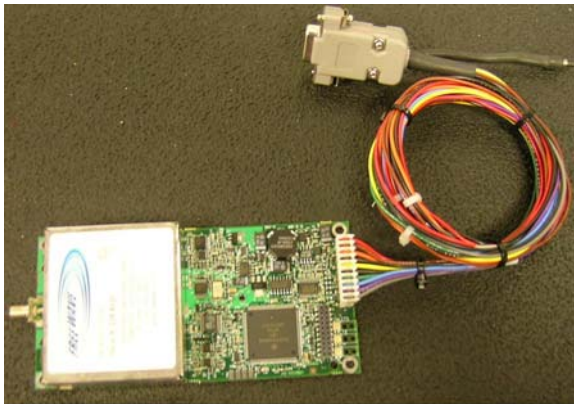
- To connect HyperTerminal to the transceiver, press the Setup button on the back of the FreeWave transceiver. If connected to the diagnostics port, type **U** (Capital 'U') to invoke the Setup menu.



Model FGR-115WC
(Waterproof)



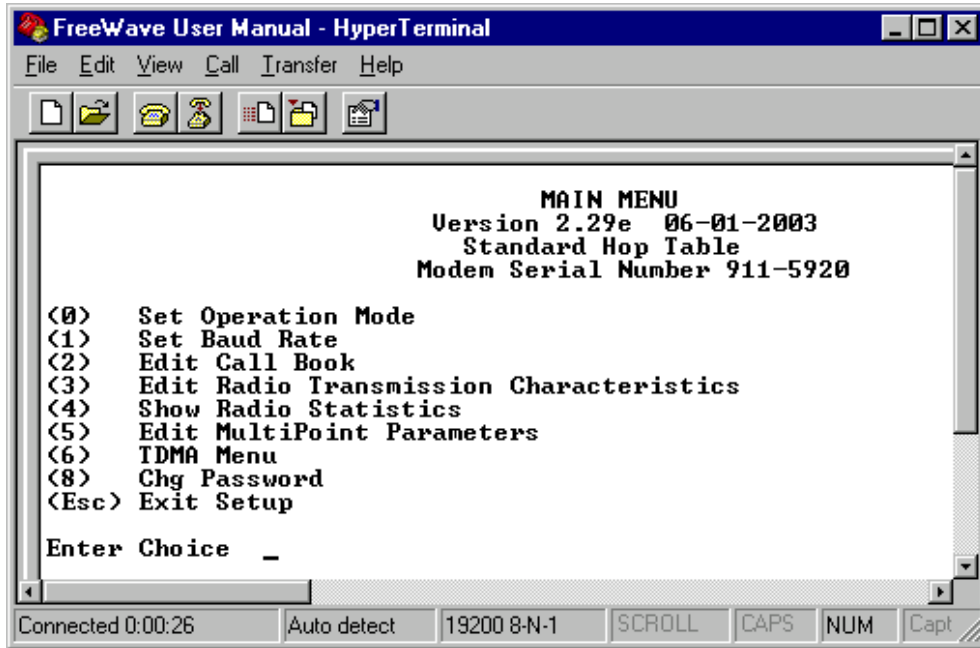
Model FGR-115RC
(Rugged)





To invoke the Setup menu in board level radios:

- Short pins 2 & 4 (Brown to Black) on the white 10 pin header next to the LED's.
- If using a Programming Cable (P/N ASC3610DB or ASC3610DJ), press the Setup button.
- If using the gray ribbon Diagnostic Cable (P/N AC2009DC), or the black Diagnostic Cable (P/N ASC0409DC), press *Shift-U* (capital U) to invoke the Setup menu.

When Setup is invoked, the FreeWave Setup **Main Menu** will display in the HyperTerminal dialog box. All three LED's on the transceiver will light green ■ ■ ■ and stay green as long as the transceiver is in the Setup mode.



Connecting and Disconnecting from HyperTerminal

The HyperTerminal dialog box displays several icons in the toolbar. To disconnect from HyperTerminal, click on the Disconnect  icon. To then reconnect click on the Call  icon. If the settings have not been saved when HyperTerminal is closed, they must be reselected when HyperTerminal reopened.

Troubleshooting HyperTerminal

The following are some common issues encountered while using HyperTerminal.

1. **Nothing appears on the screen after pressing the Setup button on the transceiver.**
This usually indicates one of two things; either the wrong Comm port is selected or a null modem RS-232 cable is being used. Follow the steps below to change the Comm ports.
 1. Click on the **Disconnect** button.
 2. Select **Properties** from the File menu.
 3. Click on the **Connect To** tab and verify that the correct Comm port is selected.
 4. Click on the **OK** button to close the Properties dialog box.
 5. Click on the **Call** button.
 6. Return the transceiver to Setup mode. The Setup menu screen should appear.
2. **Gibberish appears on the screen after pressing the Setup button.**
This usually indicates a Baud Rate problem. Follow the steps below to change the Baud Rate. The problem may also be that the transceiver under test is a TTL version and NOT RS-232. Gibberish BEFORE the Setup button is pressed indicates Diagnostics is enabled in a Master.
 1. Click on the **Disconnect** button.
 2. Select **Properties** from the File menu.
 3. Click on the **Configure** button.
 4. Change the Baud Rate to **19200** and click on the **OK** button.
 5. Click on the **OK** button to close the Properties dialog box.
 6. Click on the **Call** button.
 7. Return the transceiver to Setup mode. The Setup menu screen should appear.
3. **The Setup menu appears on the screen, but nothing happens when keys on the keyboard are pressed.**
This usually indicates a three-wire connection, Rx, Tx & Gnd. Follow the steps below if the connection uses a three-wire connection.
 1. Click on the **Disconnect** button.
 2. Select **Properties** from the File menu.
 3. Click on the **Configure** button.
 4. Change the Flow Control to **None** and click on the **OK** button.
 5. Click on the **OK** button to close the Properties dialog box.
 6. Click on the **Call** button.
 7. Return the transceiver to Setup mode. The Setup menu screen should appear.
4. **A connection exists, data is being received through HyperTerminal, and some data is correct, but the remaining data is in unrecognizable characters.**
This usually indicates a parity mismatch. To resolve this issue, ensure that the parity of the transceiver and the parity of HyperTerminal are set the same. HyperTerminal's parity settings are under Properties and the FreeWave parity is found under the Baud Rate in the Setup mode.
 1. Click on the **Disconnect** button.
 2. Select **Properties** from the File menu.
 3. Click on the **Configure** button.
 4. Change the Parity to **None** and click on the **OK** button.
 5. Click on the **OK** button to close the Properties dialog box.
 6. Click on the **Call** button.
 Return the transceiver to Setup mode. The Setup menu screen should appear.

For additional troubleshooting for HyperTerminal, call FreeWave Technical Support at (303) 381-9200.

Setting up a Transceiver

Note: Once Setup mode has been invoked in HyperTerminal, the process of exiting Setup mode involves pressing the Escape (Esc) key several times, allowing the transceiver to connect to the network. Otherwise, cycling the power is the alternative way to exit Setup mode.

```

MAIN MENU
Firmware Version——Version 2.64    01-31-2007
Standard Hop Table
Modem Serial Number 922-7402——Transceiver's unique
serial number

(0)  Set Operation Mode
(1)  Set Baud Rate
(2)  Edit Call Book
(3)  Edit Radio Transmission Characteristics——Setup Menu
(4)  Show Radio Statistics              Options
(5)  Edit MultiPoint Parameters
(6)  TDMA Menu
(8)  Chg Password
(Esc) Exit Setup

Enter Choice  _
    
```

The following section describes in detail how to use all of the Setup menu options to edit the operational parameters and view the performance data.

Operation Mode

The Operation Mode option designates the method FreeWave transceivers use to communicate with each other. FreeWave transceivers operate in a Master to Slave configuration. Before the transceivers can operate together, they must be set up to properly communicate.

In a Point-to-Point configuration, Master or Slave Mode may be used on either end of the communication link without performance degradation. When setting up the transceiver, remember that a number of parameters are controlled by the settings in the Master. Therefore, deploying the Master on the communications end where it will be easier to access is advised, but not necessary.

Operation Mode	Description
Point-to-Point Master (0)	<p>This mode designates the transceiver as the Master in Point-to-Point mode. The Master may call any or all Slaves designated in its Call Book.</p> <p>In Point-to-Point mode the Master determines the setting used for most of the radio transmission characteristics, regardless of the settings in the Slave and/or Repeaters. The settings not determined by the Master are: RF Xmit Power, Slave Security, Retry Time Out, and the Hop Table settings.</p> <p>A quick method of identifying a Master is to power the transceiver. Prior to establishing a communication link with a Slave or Repeater, all three of the Master's LED's will be solid red.</p>

Point-to-Point Slave (1)	<p>This mode designates the transceiver as a Slave in Point-to-Point mode. The Slave communicates with any Master in its Call Book—either directly or through up to four Repeaters.</p> <p>When functioning as a Slave, the Entry to Call feature in the transceiver's Call Book is not operational. The Call Book may be bypassed in the Slave by setting Slave Security to 1. See the Slave Security section later in this manual.</p>
Point-to-MultiPoint Master (2)	<p>This mode designates the transceiver as a Master in MultiPoint mode. This mode allows one Master transceiver to simultaneously be in communication with numerous Slaves and Repeaters.</p> <p>A Point-to-MultiPoint Master communicates only with other transceivers designated as Point-to-MultiPoint Slaves or Point-to-MultiPoint Repeaters.</p>
Point-to-MultiPoint Slave (3)	<p>This mode designates the transceiver as a Slave in MultiPoint mode. This mode allows the Slave to communicate with a MultiPoint Master. The Slave may communicate with its Master through one or more Repeaters.</p>
Point-to-Point Slave/Repeater (4)	<p>This mode designates the transceiver to act as <i>either</i> a Slave or Repeater—depending on the instructions from the Master. The transceiver cannot act as both a Slave and a Repeater at the same time. True Slave/Repeater functionality is only available in a MultiPoint mode.</p> <p>Note: Repeaters have no security features. When a transceiver is designated a Point-to-Point Slave/Repeater, it will allow any Master to use it as a Repeater.</p>
Point-to-Point Repeater (5)	<p>FreeWave allows the use of up to four Repeaters in a Point-to-Point communications link, significantly extending the operating range. When designated as a Repeater, a transceiver behaves as a pass-through link. All settings for the call book, baud rates and radio transmission characteristics are disabled. A Repeater will connect with any Master that calls it. The Repeater must be set up properly in the Master's call book.</p>
Point-to-Point Slave/Master Switchable (6)	<p>Mode 6 allows the transceiver to be controlled entirely through software commands. A number of key parameters in FreeWave's user interface may be changed either directly with a program such as Windows Terminal or through the use of script files. Additionally, when the Point-to-Point Slave/Master Switchable option is selected and the transceiver is not calling a Slave, it will function as a Slave and accept any appropriate calls from other transceivers.</p>
Point-to-MultiPoint Repeater (7)	<p>This option allows the transceiver to operate as a Repeater in a MultiPoint network. See the MultiPoint parameters section for details on enabling MultiPoint Slave/Repeater mode.</p>
Mirrorbit Master (A)	<p>This option allows the transceiver to operate as a Master radio compatible with the SEL Mirrorbit Protocol (see FGR Radio Modem in Mirror Bit Mode Addendum, LAD0006AB for more information).</p>
Mirrorbit Slave (B)	<p>This option allows the transceiver to operate as a Slave radio compatible with the SEL Mirrorbit Protocol (see FGR Radio Modem in Mirror Bit Mode Addendum, LAD0006AB for more information).</p>
Ethernet Options (F)	<p>This menu is only needed for Ethernet transceivers. Although this menu is included here, it is unrelated to the transceiver's Mode.</p> <p>Please see the Ethernet addendum for more information on this menu.</p>

Set Operation Mode

1. Selecting **0** Set Operation Mode from the Main Menu displays the following window:

```

                                SET MODEM MODE
                          Modem Mode is  2

(0)  Point to Point Master
(1)  Point to Point Slave
(2)  Point to MultiPoint Master
(3)  Point to MultiPoint Slave
(4)  Point to Point Slave/Repeater
(5)  Point to Point Repeater
(6)  Point to Point Slave/Master Switchable
(7)  Point to MultiPoint Repeater
(A)  Mirrorbit Master
(B)  Mirrorbit Slave
(F)  Ethernet Options
(Esc) Exit to Main Menu

Enter Choice  _

```

2. Select the appropriate operation mode by typing the associated number or letter after **Enter Choice**.
3. When the selection is accepted the Set Modem Mode menu will refresh and display the updated mode.
4. Press the **Esc** key once to return to the Main Menu.

USING THE POINT-TO-POINT SLAVE/MASTER SWITCHABLE OPERATION MODE (MODE 6)

When using the Point-to-Point Slave/Master Switchable operation mode, it is important to remember the following items:

- Mode 6 is ONLY available while using an RS232 interface. (The DTR line is not available in RS485/422 mode.)
- When using DGR radios, Diagnostics must be turned off for this mode to work. Diagnostics may be enabled when using FGR radios.
- The transceiver remains in Slave mode until called by another transceiver in its Call Book or instructed to call another transceiver through an AT command. All script file or AT commands issued to the transceiver in switchable operation mode must be in ALL CAPS.
- If the DTR line is asserted when the command is given, it will call out immediately. Conversely, after an AT command is given, the transceiver will not call out until DTR goes high.
- The Master will disconnect when DTR goes low.
- The user may change settings in the user interface without using the Setup button.
- Predetermined script files may be used which allow many of the transceiver's settings to be changed upon execution of that file. This allows the user to establish push button command sets that instruct the transceiver to call a predetermined Slave.

SCRIPT FILE OR AT COMMANDS

The following list includes the commands available to use in Point-to-Point Slave/Master Switchable operation mode and the functions the command controls.

Script File or AT Command	Function Controlled
ATXF	Frequency Key
ATXT	Max Packet Size
ATXD	Min Packet Size
ATXX	Transmit Rate
ATXR	RF Data Rate
ATXP	RF Transmit Power
ATDT	Position in Call Book to Call
ATD	Allows a specific FreeWave Serial Number to be entered to call
ATXC	Used in conjunction with the ATD command, instructs transceiver which Repeater path to follow
ATXS	Instructs transceiver to go into Setup Mode

In general, the AT-commands supported by the transceiver can be divided into two types:

SETTING commands result in changes on the local transceiver.

ATXF_, ATXT_, ATXD_, ATXX_, ATXR_, ATXP_, or ATXS

COMMUNICATION – LINK commands result in the transceiver trying to establish the communication links with other transceivers.

ATDT_, ATD_ or ATXC_ in conjunction with the ATD_

Transceivers react differently to the two types of the AT-commands. After receiving a Setting AT-command, the transceiver will process the command and, when finished, it will remain in the Point-to-Point Slave/Master Switchable mode.

Conversely, if the Communication - Link command is sent to a transceiver, it will process the command and, when finished, will change its mode of operation, which in simple terms can be best described as a Point-to-Point Master-like mode. In this mode the transceiver will not react to incoming AT-commands; however, it will transmit them across the RF link as user's data. The transceiver will stay in this mode until its DTR line is de-asserted.

In order for a transceiver to accept any AT-commands, its DTR line must be asserted. However, the DTR line has to be held asserted for different time durations depending on which type of command is given.

Follow the steps below to assure the proper functionality of a transceiver in Mode 6 operation.

For **Setting** AT-commands:

1. Ensure the Baud Rate in Radio matches Baud Rate of AT-commands. (Menu 1)
2. Assert the DTR line on transceiver's data port.
3. Send the AT-command(s) to the transceiver on the Data Receive Line.
4. De-assert the DTR line after the transceiver responds to all of the AT-commands sent to it.
5. Repeat from Step 1, if needed.

For **Communication - Link** AT-commands:

1. Assert DTR line on transceiver's data port.
2. Send the AT-command(s) to the transceiver on the Data Receive Line.
3. Hold DTR line asserted until the communication link between the local and remote transceiver is established over the RF channel or the protocol reports a timeout.
4. Repeat from Step 1, if needed.

ASSERT AND DE-ASSERT DEFINITIONS

Assert and de-assert voltage levels depend on the data port interface type.

For transceivers with a **TTL** interface:

Assert line means to provide logic low TTL level (0 VDC) at the input of the transceiver.

De-assert line means to provide logic high TTL level (+5 VDC) at the input of the transceiver.

For transceivers with an **RS232** interface:

Assert line means to provide positive voltage at the input of RS232 transceiver (+3...+12 VDC).

De-assert line means to provide negative voltage at the input of RS232 transceiver (-3...-12 VDC).

ATDT COMMANDS:

ATXC_ is similar to manually changing the **Entry to Call** parameter in the transceiver's Call Book. For example:

- **ATXC0** will change **Entry to Call** to '0' (zero).
- **ATXCA** will change **Entry to Call** to 'All'.

If a link to a Slave needs to be made without using a Repeater, it is imperative that the **ATXC#** command is issued. Otherwise, issue the command **ATD#####** where **#####** is the serial number of the transceiver with which a link is being made. The transceiver will follow the path defined in the Call Book and link first to the Repeater(s) specified and then to the Slave transceiver.

ATDT_ is similar to **ATXC_**, except after the **Entry to Call** parameter in the transceiver's Call Book has been changed, the transceiver will start calling this number. For example, sending **ATDT0** to a transceiver will:

1. Change its Entry to Call to '0' (zero).
2. This will cause it to start calling the transceiver with the serial number listed in the main column of the Call Book on line '0'.

When this command is issued, the transceiver's Call Book must not have any '000-0000' entries in it at any position before the number to be used per the **ATDT_** command.

Issuing **ATDT0** or **ATDT1** will result in the transceiver calling the transceiver entered on Line 0 or 1, respectively. However, issuing **ATDT3** will not work because '000-0000' is entered on Line 2 in the Call Book.

```
0    900-1234
1    900-5678
2    000-0000
3    900-4321
4    000-0000
5    000-0000
6    000-0000
7    000-0000
8    000-0000
9    000-0000
```

ATD_ This command does not work if **Entry to Call** is set to 'All' or if the Call Book is empty. If **Entry to Call** is set to 'All', the transceiver which received the **ATD_** command will try to communicate with any Slave in the network that is listening, regardless of the serial number specified in the **ATD_** command. The line, to which **Entry to Call** is referring to, should have:

- A non-zero serial number entry in the main column and no entries in the Repeaters columns if no Repeaters to be used

Or

- A non-zero serial number entry in the main column followed by valid entry(s) in the Repeaters column(s) of one or more Repeaters to be used.

ATXS Sending this command will force the transceiver to enter Setup mode. While in Setup mode, the transceiver's RS232 baud rate will be set as what was programmed in the Baud Rate Menu rather than the typical 19200 bits/s.

CALLING A TRANSCEIVER THAT IS NOT LISTED IN THE CALL BOOK

Point-to-Point Slave/Master Switchable mode accepts the command **ATD#####** where **#####** is any transceiver serial number. Upon receipt of this command the transceiver calls the defined transceiver, even if the number is not in the sending transceiver's Call Book.

The Slave Security may be disabled so that a transceiver operating as a Slave in Modes 1, 4, or 6, will connect to any transceiver calling it regardless of whether or not the calling transceiver is in the Slave's Call Book. This feature is necessary when more than 10 transceivers may call into a Slave. For more information, see *Slave Security*.

Calling a transceiver through one or two Repeaters

In conjunction with the ATD command, the transceiver may be instructed to use the Repeater(s) specified in the Call Book. This means it is possible to call an unlimited number of Slaves through script files in Point-to-Point Slave/Master Switchable operation mode and have up to 10 different Repeater combinations. Before calling a transceiver through one or two Repeaters, the Repeaters to be used must first be set up in the Call Book. This is done by setting up a line in the Call Book to call through the Repeater(s) which are to be used.

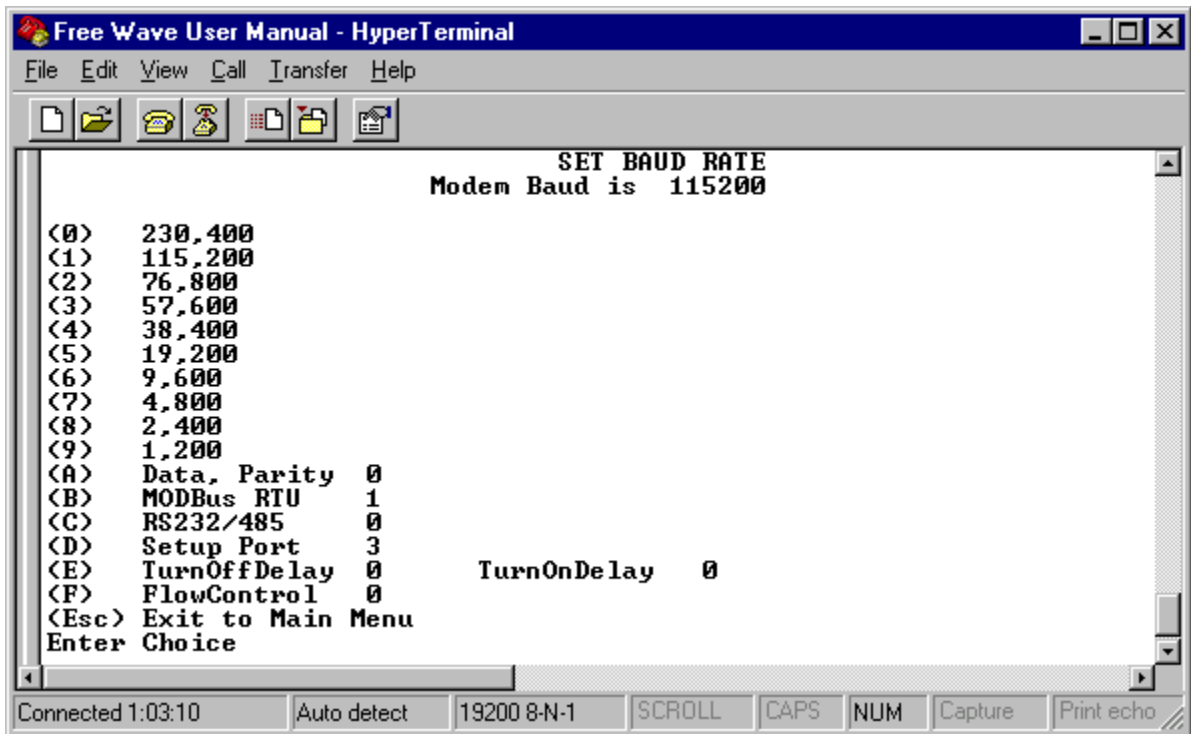
Note: All serial Repeaters must be entered in the Call Book with respect to the Master. For example, Repeater 1 will be the first radio the Master communicates with. Repeater 2 will be the second, and so on.

Baud Rate

This setting is the communication rate between the transceiver and the instrument to which it is connected. It is important to note that this is independent of the baud rate for the other transceiver(s) in the network. For example, a pair of transceivers may be used in an application to send data from remote process instrumentation to an engineer's computer. In this application, the baud rate for the transceiver on the instrumentation might be set to 9600, and the transceiver on the engineer's computer might be set to 57,600.

Set Baud Rate

1. Selecting **1** Set Baud Rate from the Main Menu displays the following window.



2. Select the appropriate baud rate or option by typing in the associated number or letter after **Enter Choice**. As this is the baud rate for the data port, it must match the baud rate of the device attached to the transceiver.
3. When the selection is accepted, the Set Baud Rate menu will refresh and display the updated mode.
4. Press the **Esc** key to return to the main Setup menu.

Note: The Setup Baud Rate will ALWAYS default to 19,200 Baud no matter what the data port Baud Rate is set to.

Baud Rate	Description
Actual Baud Rate (selections 0-9)	The actual baud rate for the transceiver's data port. It is desirable to set the baud rate to the highest level supported by the device to which it is connected. In certain circumstances, however, this may actually result in slower data communications.

<p>Data, Parity (A)</p>	<p>Six data word length and parity configurations are available to be used with FreeWave transceivers. The default setting is 0 (8, N, 1) and is the most commonly used serial communications protocol. When Data, Parity are selected from the Baud Rate menu, a prompt to enter a value for Data, Parity displays. The following describes each option:</p> <table border="1" data-bbox="451 373 1427 604"> <thead> <tr> <th>Menu</th> <th>Setting</th> <th>Data Bits Parity</th> <th>Stop Bits</th> </tr> </thead> <tbody> <tr> <td>0</td> <td>8</td> <td>None</td> <td>1</td> </tr> <tr> <td>1</td> <td>7</td> <td>Even</td> <td>1</td> </tr> <tr> <td>2</td> <td>7</td> <td>Odd</td> <td>1</td> </tr> <tr> <td>3</td> <td>8</td> <td>None</td> <td>2</td> </tr> <tr> <td>4</td> <td>8</td> <td>Even</td> <td>1</td> </tr> <tr> <td>5</td> <td>8</td> <td>Odd</td> <td>1</td> </tr> </tbody> </table>	Menu	Setting	Data Bits Parity	Stop Bits	0	8	None	1	1	7	Even	1	2	7	Odd	1	3	8	None	2	4	8	Even	1	5	8	Odd	1
Menu	Setting	Data Bits Parity	Stop Bits																										
0	8	None	1																										
1	7	Even	1																										
2	7	Odd	1																										
3	8	None	2																										
4	8	Even	1																										
5	8	Odd	1																										
<p>Modbus RTU (B)</p>	<p>Support for Modbus RTU protocol is available. The default setting for Modbus RTU is 0 (Not Enabled).</p> <p>To enable the Modbus RTU mode:</p> <ol style="list-style-type: none"> 1. In the Set Baud Rate menu enter (B) and then select 1 2. In the Set MultiPoint Parameters menu, set Master Packet Repeat to 3. <p>Note: When using the transceiver in Modbus RTU mode, the Master Packet Repeat must be set to 3 regardless of whether the network is in Point-to-Point or MultiPoint mode. The Modbus RTU mode must be selected when transceivers are configured in RS485 or RS422 mode.</p>																												
<p>RS232/485 (C)</p>	<p>In products for which the protocol of the data port is software selectable (FGR09xx, FGR-115RC, FGR115WC, etc.), use this menu to set the protocol of the data port. In TTL RF board products (FGR09Tx) and Ethernet products (FRG-115RE), this setting must be "0".</p> <table border="1" data-bbox="451 1129 1427 1297"> <thead> <tr> <th>Menu</th> <th>Protocol</th> <th>Additional Information</th> </tr> </thead> <tbody> <tr> <td>0</td> <td>RS232</td> <td>Also used for TTL and Ethernet transceivers.</td> </tr> <tr> <td>1</td> <td>RS422</td> <td>Modbus RTU mode must be enabled. See above.</td> </tr> <tr> <td>2</td> <td>RS485</td> <td>Modbus RTU mode must be enabled. See above.</td> </tr> <tr> <td>3</td> <td>DOT</td> <td>Special for the Department of Transportation.</td> </tr> </tbody> </table> <p>Note: When DOT mode is enabled, the TimeDelay settings operate the same as in the RS485/422 mode.</p> <p>Note: RS4xx mode must have Modbus RTU enabled, and TurnoffDelay set to at least 4.</p>	Menu	Protocol	Additional Information	0	RS232	Also used for TTL and Ethernet transceivers.	1	RS422	Modbus RTU mode must be enabled. See above.	2	RS485	Modbus RTU mode must be enabled. See above.	3	DOT	Special for the Department of Transportation.													
Menu	Protocol	Additional Information																											
0	RS232	Also used for TTL and Ethernet transceivers.																											
1	RS422	Modbus RTU mode must be enabled. See above.																											
2	RS485	Modbus RTU mode must be enabled. See above.																											
3	DOT	Special for the Department of Transportation.																											
<p>Setup Port (D)</p>	<p>Note: DO NOT change this setting unless the correct programming cable is available for the new setting.</p> <p>This setting determines which port, Main or Diagnostics, is used to enter the Setup Main Menu.</p> <table border="1" data-bbox="451 1675 1427 1843"> <thead> <tr> <th>Menu</th> <th>Port</th> <th>Additional Information</th> </tr> </thead> <tbody> <tr> <td>1</td> <td>Main Only</td> <td>The terminal is connected to the Main Data Port.</td> </tr> <tr> <td>2</td> <td>Diagnostics Only</td> <td>The terminal is connected to the Diagnostic Port.</td> </tr> <tr> <td>3</td> <td>Both Ports</td> <td>The terminal may be connected to either port.</td> </tr> </tbody> </table> <p>The factory setting is based on the type of transceiver. A setting of "2" will be used</p>	Menu	Port	Additional Information	1	Main Only	The terminal is connected to the Main Data Port.	2	Diagnostics Only	The terminal is connected to the Diagnostic Port.	3	Both Ports	The terminal may be connected to either port.																
Menu	Port	Additional Information																											
1	Main Only	The terminal is connected to the Main Data Port.																											
2	Diagnostics Only	The terminal is connected to the Diagnostic Port.																											
3	Both Ports	The terminal may be connected to either port.																											

	<p>with Ethernet products and Mirrored Bit products, a setting of "3" will be used otherwise. Setup mode is invoked by sending a "U" (capital) to the Diagnostics port or by pressing/toggling the Set-up button/switch, if available. OEM boards may also enter Setup when Pin 2 is grounded. The Ethernet reset button will NOT put the unit into Setup mode. Ethernet transceivers must use the "U" option.</p> <p>The Main Data Port is the RS232 port. The Diagnostics port is a 3-pin connector on the rear panel of the FGR-115RC, the FGR-115RE and the OEM "Mini" series transceivers. The diagnostic cable for this port (ASC0409DC) is available from FreeWave. The FGR09xx OEM modules use a 2-row, 2 mm female connector. The diagnostic cable for this port (ASC2009DC) is available from FreeWave.</p>															
<p>TurnOn/OffDelay (E)</p>	<p>TurnOnDelay- Sets the delay between when the line drivers are turned on and when the data leaves the data port. This setting can be adjusted for a 1-9mS delay.</p> <p>TurnOffDelay- This setting specifies the time after the end of transmission of a character to the RS485 bus that the transceiver stops driving the bus and releases the bus to other devices. The units are ¼ of a character with a range of 0-9. An entry of 4 means a delay equivalent to the duration of a full character. Default is zero delay.</p> <p>For data rates of 1200 bits/S or slower, avoid setting the TurnoffDelay parameter higher than 4. At those rates the functionality of the microprocessor changes so that a TurnoffDelay of 5 will have the same effect as if set to 1, and a setting of 6 will have the same effect as 2, and so on.</p> <p>Note: TurnOffDelay must be set to a value of at least 4 for RS4xx operation.</p>															
<p>FlowControl (F)</p>	<p>This menu specifies the hardware flow control for the Data port. The options for 0-3 are described below.</p> <table border="1" data-bbox="451 1178 1430 1440"> <thead> <tr> <th>Menu</th> <th>Port</th> <th>Additional Information</th> </tr> </thead> <tbody> <tr> <td>0</td> <td>None</td> <td>Default – CTS is active and de-asserts when buffer is 98% full. Can pass XON/XOFF data but does not utilize it in any way.</td> </tr> <tr> <td>1</td> <td>RTS/CTS</td> <td></td> </tr> <tr> <td>2</td> <td>DTR</td> <td></td> </tr> <tr> <td>3</td> <td>DOT</td> <td>Half Duplex</td> </tr> </tbody> </table>	Menu	Port	Additional Information	0	None	Default – CTS is active and de-asserts when buffer is 98% full. Can pass XON/XOFF data but does not utilize it in any way.	1	RTS/CTS		2	DTR		3	DOT	Half Duplex
Menu	Port	Additional Information														
0	None	Default – CTS is active and de-asserts when buffer is 98% full. Can pass XON/XOFF data but does not utilize it in any way.														
1	RTS/CTS															
2	DTR															
3	DOT	Half Duplex														
<p>Use break to access setup (G)</p>	<p>This option is used to enable a break command to put the radio into setup mode over the data port. The settings are:</p> <table border="1" data-bbox="451 1535 1360 1755"> <thead> <tr> <th>Option</th> <th>Description</th> </tr> </thead> <tbody> <tr> <td>0</td> <td>Break Disabled</td> </tr> <tr> <td>1</td> <td>Enable Break Command – the setup menu is sent at 19200 bps</td> </tr> <tr> <td>2</td> <td>Enable Break Command – the setup menu is sent at the radio's current baud rate</td> </tr> </tbody> </table> <p>To send a break character the end device must hold the Tx data line in the space voltage level for longer than 1 character time. If a character is defined as having 1 start bit, 8 data bits, and 1 stop bit, the character time is 10 bits, thus the Tx data line must be held in the space voltage level for a period of time longer than 10 bits</p>	Option	Description	0	Break Disabled	1	Enable Break Command – the setup menu is sent at 19200 bps	2	Enable Break Command – the setup menu is sent at the radio's current baud rate							
Option	Description															
0	Break Disabled															
1	Enable Break Command – the setup menu is sent at 19200 bps															
2	Enable Break Command – the setup menu is sent at the radio's current baud rate															

Call Book

The Call Book is required to be used in Point-to-Point networks. While the call book is an option in Point-to-MultiPoint networks, the Network ID feature is strongly recommended in most applications.

The instructions provided in this section are for Point-to-Point mode only. Use of the Call Book for MultiPoint networks is explained later in this chapter.

Using the Call Book offers both security and flexibility in determining how FreeWave transceivers communicate with each other.

Three settings must be made for two FreeWave transceivers to communicate in Point-to-Point mode:

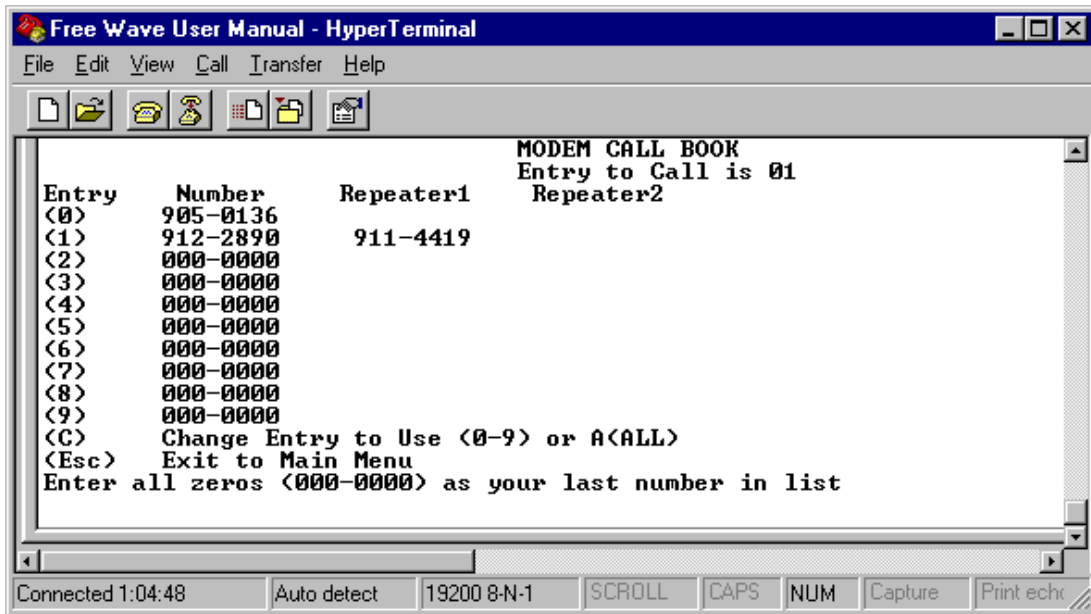
1. The Master's serial number must be listed in the Slave's Call Book or Slave Security is turned off in the Slave.
2. The Slave's serial number must be listed in the Master's Call Book.
3. The Master must be programmed to call the Slave.

The Call Book allows users to incorporate up to 10 FreeWave transceivers, designate 1 to 4 Repeaters to be used with each transceiver, and designate which Slave the Master will call. To set the **Entry to Call** option, enter **C** at the prompt, followed by the menu number corresponding to that Slave. To call any available Slave in the list, enter **C** then enter **A** to direct the Master to Call All.

Note: To call a Slave through one or more Repeaters, that Slave must be called individually. With Call All selected, the Master will not connect with any Slaves through Repeaters. The Master calls every Slave in the list and will connect with the first Slave that responds. When calling through a Repeater, the Master must first call that Repeater and establish a communication link with it prior to making contact with the Slave.

Edit Call Book

1. Selecting 2 Call Book from the Main Menu displays the following window:



2. Select the appropriate number to edit by typing the associated line number at the cursor.
3. **Enter New Number** will appear. Enter the 7-digit serial number of the transceiver to be linked to.

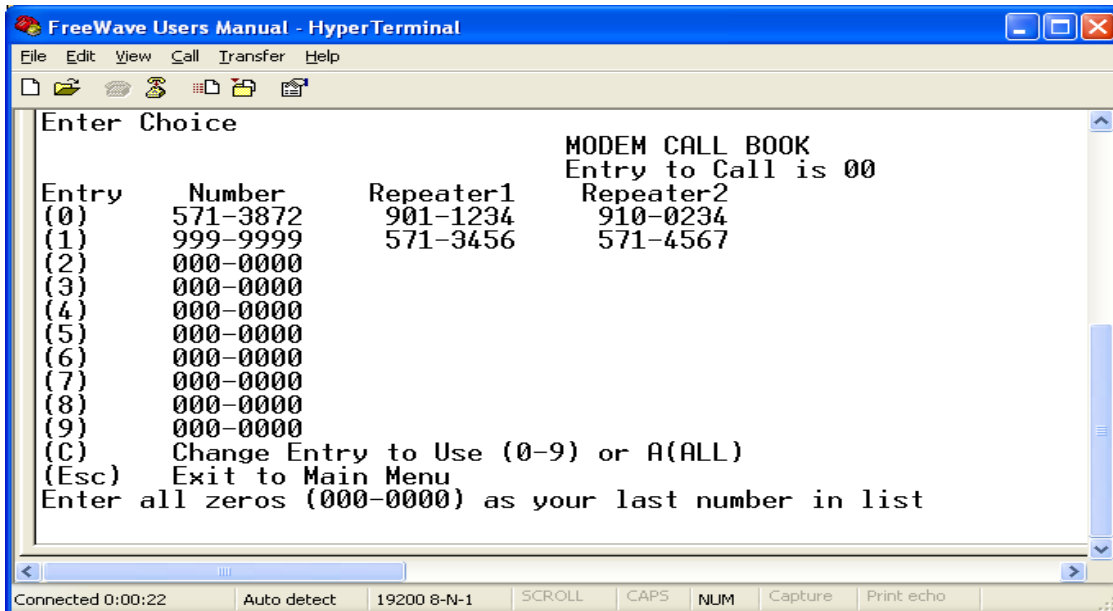
4. The system will prompt for Repeater 1's number. If no Repeaters are being used, press the **Esc** key. (skip step 5) Otherwise, enter the 7-digit serial number of the Repeater.
5. The system will then prompt for Repeater 2's number. Enter the 7-digit serial number of the second Repeater. If only one Repeater is being used, press the **Esc** key.
6. The system refreshes the transceiver's Call Book menu with the new changes.
7. Press the **Esc** key to return to the Main Menu.

Note: When entering numbers into the Call Book, Repeaters need only be defined in the Master Call Book. The Slave Call Book only requires the Master's Serial number. A repeater need not have anything listed in its Call Book.

PROGRAMMING POINT-TO-POINT EXTENDED CALL BOOK TO USE THREE OR FOUR REPEATERS

In a Point-to-Point configuration FreeWave transceivers can utilize up to 4 Repeaters. To use 3 or 4 Repeaters, program the Call Book with the Slave's serial number, followed by the first 2 Repeaters. On the next line enter 999-9999 as the transceiver to call. When prompted for the Repeaters enter the third and fourth Repeaters in the link.

The illustration below depicts a Point-to-Point link where a Slave is called through 4 Repeaters. In this example the Master is calling the Slave, 571-3872, through Repeater 1, 901-1234, then Repeater 2, 910-0234, then Repeater 3, 571-3456, and finally Repeater 4, 571-4567. It is the entry of serial number 999-9999 in line 1 that instructs the Master to continue calling through the Repeaters programmed on that line.



It is important that the Call Book Entries (0-9) are filled sequentially starting with Entry (0). When a Master is instructed to Call All, it will call all Slaves listed until it reaches the first serial number of 000-0000. If a valid serial number is entered after the all zero number or as a Repeater, it will not be recognized as a valid number by the Master.

PROGRAMMING POINT-TO-MULTIPOINT CALL BOOK

In a MultiPoint network, the Slaves and Repeaters are not listed in the Master's Call Book. A Slave must have the Master and any Repeater it is going to use in its Call Book.

Note: If the Network ID feature is used in a MultiPoint network, no entries are needed in the Call Book of any of the transceivers. See the Network ID feature in the MultiPoint Parameters section.

The following example shows the Call Books of a MultiPoint network comprised of a Master, Repeater and Slave in which the Slave can communicate either through the Repeater or directly to the Master:

MultiPoint Master Call Book (Unit Serial Number 555-0001)

Entry	Number	Repeater1	Repeater2
(0)	000-0000		
(1)	000-0000		

No serial number entries are necessary in the Master's Call Book.

MultiPoint Repeater Call Book (Unit Serial Number 555-0002)

Entry	Number	Repeater1	Repeater2
(0)	555-0001		
(1)	000-0000		

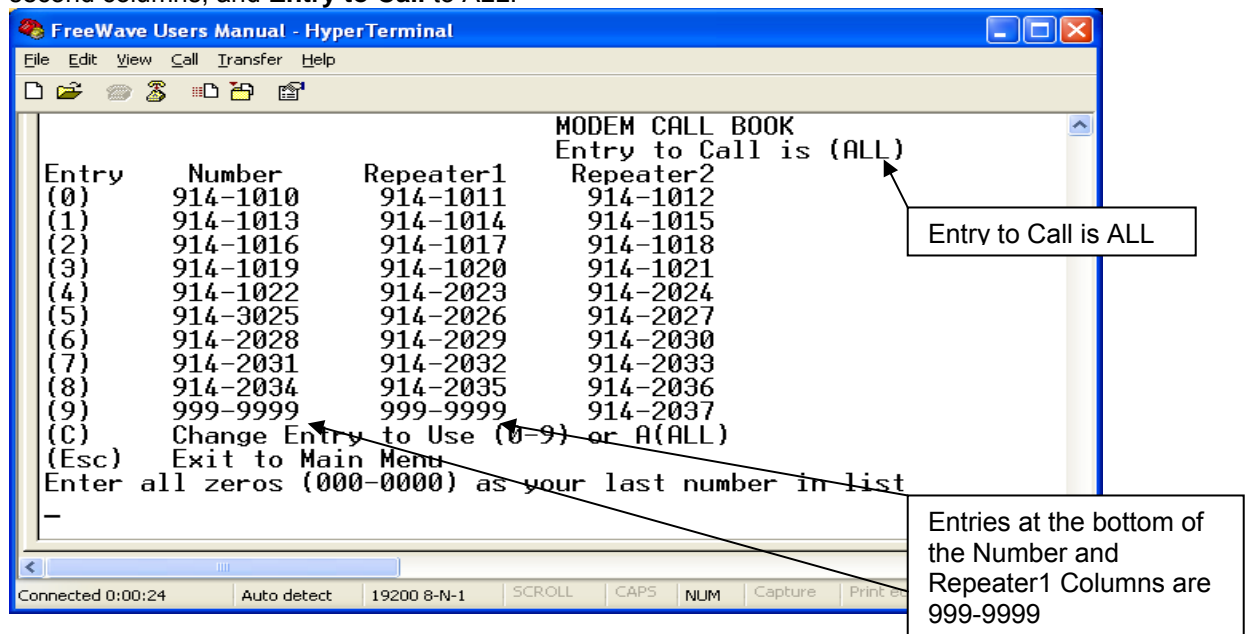
MultiPoint Slave Call Book (Unit Serial Number 555-0003).

Entry	Number	Repeater1	Repeater2
(0)	555-0001		
(1)	555-0002		
(2)	000-0000		

At times it may be desirable to force a Slave to go through a specific MultiPoint Repeater. In this scenario, the Slave's Call Book should contain only the serial number for that Repeater as the entry on line 0.

PROGRAMMING POINT-TO-MULTIPOINT EXTENDED CALL BOOK

In a MultiPoint network, a Slave can be programmed to roam between Masters and Repeaters using the MultiPoint Extended Call Book function. A Slave with its Call Book configured as below will communicate with any transceiver whose serial number appears in any of the three columns. This functionality is enabled by setting Network ID to 255 then in the Call Book 999-9999 as the last entry in the first and second columns, and **Entry to Call** to ALL.



Radio Transmission Characteristics

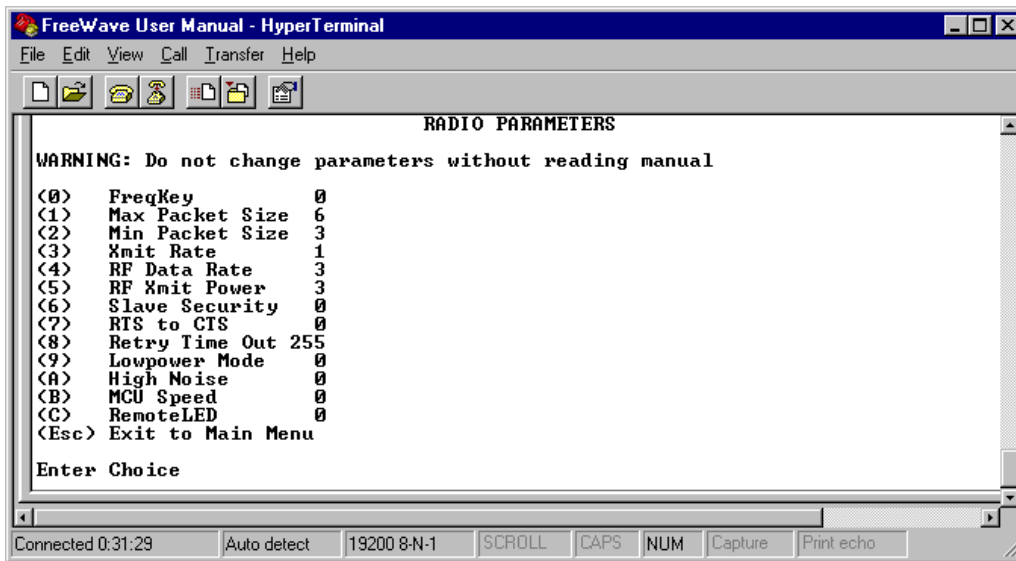
The Edit Radio Transmission Characteristics option allows the user to modify several different parameters in the transceiver. Many of these parameters must be maintained throughout the network for proper functionality.

Note: This menu is **only** for the sophisticated user who has a good understanding of the principles of radio data transmission.

The settings for the Slave(s) and Repeater(s) not determined by the Master are RF Xmit Power, Slave Security, Retry Time Out and Hop Table Size, Hop Table Version, and Hop Table Offset.

Edit Radio Transmission Characteristics

Selecting **3** Edit Radio Transmission Characteristics from the Main Menu displays the following window:



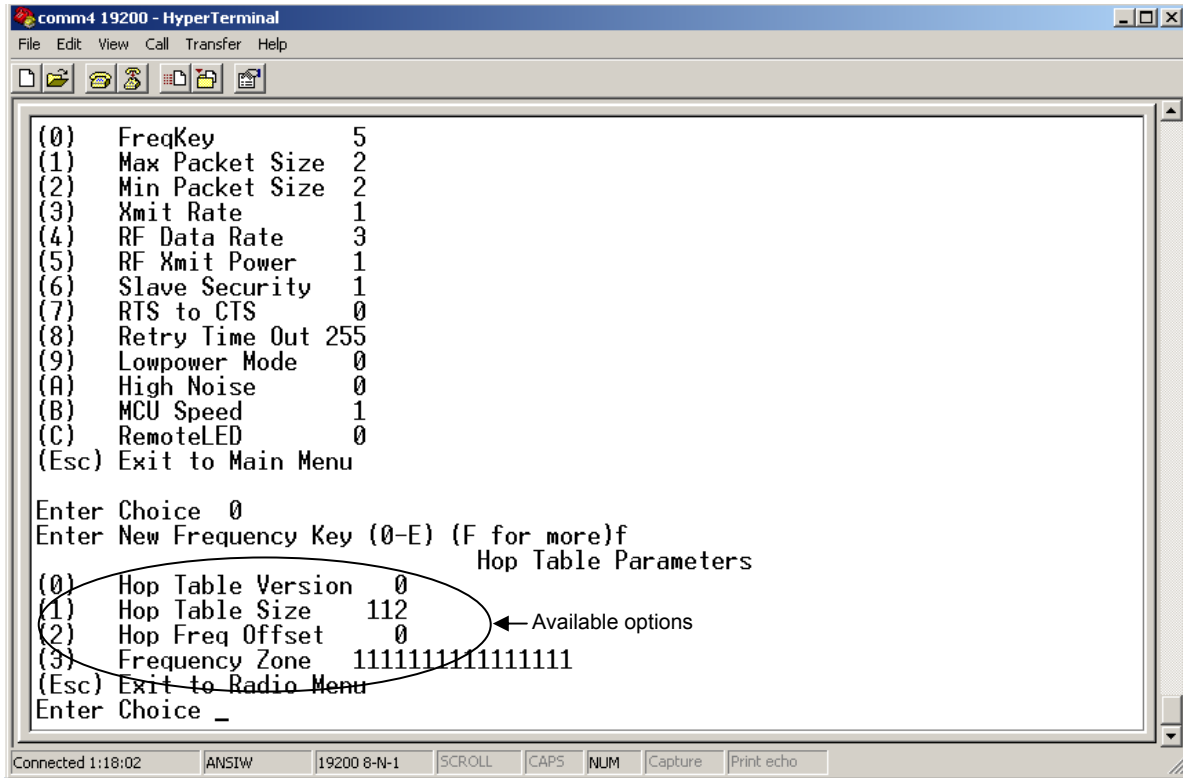
FREQKEY IN 900 MHZ TRANSCEIVERS

Selection **0** in the Radio Parameters menu allows the user to modify the hopping patterns of the transceiver. Fifteen choices are available for the FreqKey (0-9 and A-E) setting, representing 15 different pseudo-random hop patterns. This is to minimize the interference with other FreeWave transceivers operating in the area. For instance, if 10 pairs of FreeWave transceivers are operating on different networks in close proximity, setting a different FreqKey value reduces the chance that transceivers will hop to the same frequency at the same time. If two networks were to hop to the same frequency, the next hop would be to a different frequency for both networks.

Additional network separation can be gained by adjusting the Max and Min packet sizes, options 1 and 2.

After selecting **0** FreqKey, select **F** for additional options. The Hop Table Parameters will appear in the window. From this menu, more network differentiation can be defined by way of limiting the number and location of frequencies the transceivers may hop on in the 902-928 MHz band.

Note: ALL transceivers in a network must have identical Hop Table settings to function properly.



(0) HOP TABLE VERSION

Entry 0 allows the user to choose the portion of the band in which the transceiver will operate.

Selection	Name	Band
0	902 – 928 MHz	Full 902-928 MHz
1	915 – 928 MHz	915-928 MHz
2	902 – 928 Mhz, 16 fewer freqs	902-928 MHz, 16 fewer frequencies than full U.S. set
3	916 – 920 MHz	916-920 MHz
4	921 – 928 MHz	921-928 MHz
5	902 – 911 & 919 – 928 MHz	Uses 902-928 MHz with center frequencies of 911-919 MHz notched out
6	902 – 915 MHz	902-915 MHz

Note: Do not use FreqKey 14 (E) with the Australia (915-928 MHz), Taiwan (916-920 MHz), and New Zealand (921-928) hop tables.

(1) HOP TABLE SIZE

The Hop Table Size defines how many separate channels will be used by a given network. For 900MHz networks, the Hop Table Size may be set from 50 to 112.

(2) HOP FREQ OFFSET

The Hop Freq Offset option is not functional in the 900 MHz spread spectrum transceiver.

Note: Regardless of the FreqKey used, all transceivers in either Point-to-Point or Point-to-MultiPoint networks must be set to identical Hop Table Version, Hop Table Size and Hop Freq Offset.

(3) FREQUENCY ZONE

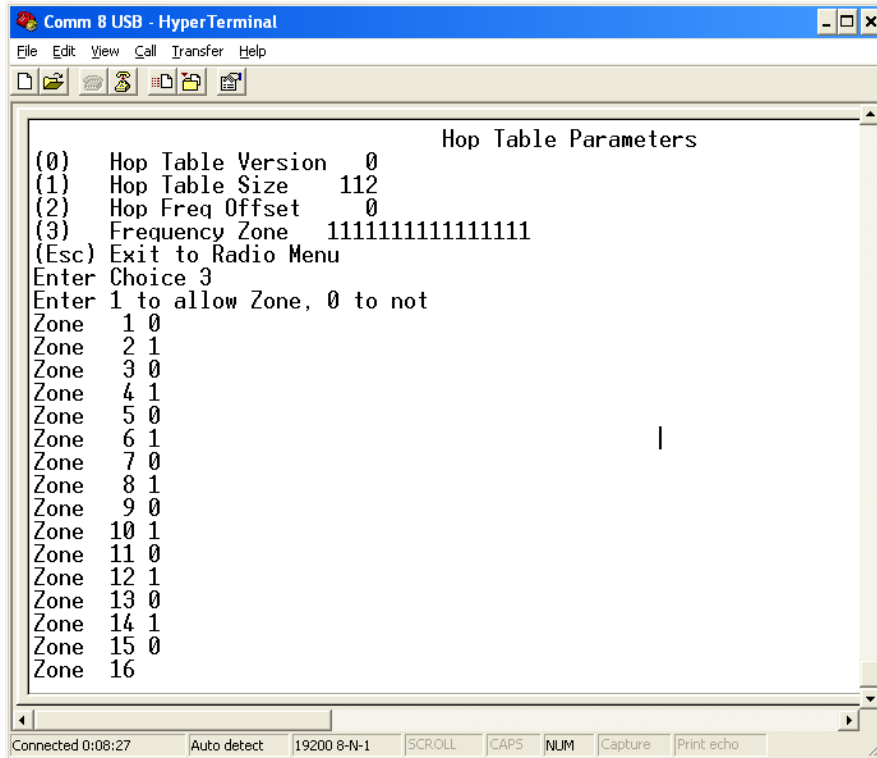
Frequency Zone: The idea of frequency zoning is to divide the available band (902MHz to 928 MHz) into 16 smaller bands each consisting of 5, 7, or 8 Frequency channels depending on the frequency zone. These 16 zones are controlled by selecting option 3 and then entering a 1 (Enable) or a 0 (Disable) next to the appropriate zone number. This can be seen in the screen shots below. Every other zone is disabled, thereby reducing the number of available channels for the radios to hop upon. For optimum network performance the entire network must be set to the same Frequency Zone settings. Also, this feature should only be used with the standard hop table.

Zone Number	Beginning Freq. (MHz)	Ending Freq. (MHz)	Number Of Channels
1	902.2464	903.8592	8
2	904.0896	905.4720	7
3	905.7024	907.0848	7
4	907.3152	908.6976	7
5	908.9280	910.3104	7
6	910.5408	911.9232	7
7	912.1536	913.5360	7
8	913.7664	915.1488	7
9	915.3792	916.7616	7
10	916.9920	918.6048	8
11	918.8352	920.2176	7
12	920.4480	921.8304	7
13	922.0608	923.4432	7
14	923.6736	925.0560	7
15	925.2864	926.6688	7
16	926.8992	927.8208	5

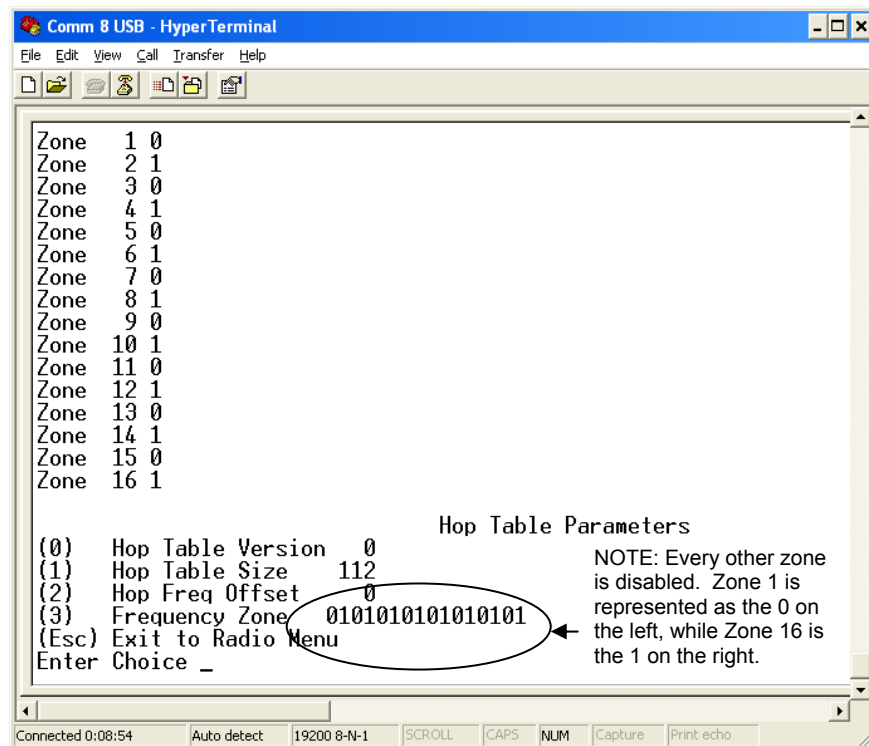
Frequency Zones are activated through the Setup menu. To enable zoning from the main Setup menu of the radio:

1. Select Menu **3** "Edit Radio Transmission Characteristics"
2. Select Option **0** "FreqKey"
3. Select **F** "For More"
4. Select Option **3** "Frequency Zone"

Enter **1** to enable desired frequency zone and a **0** to disable desired frequency zone.

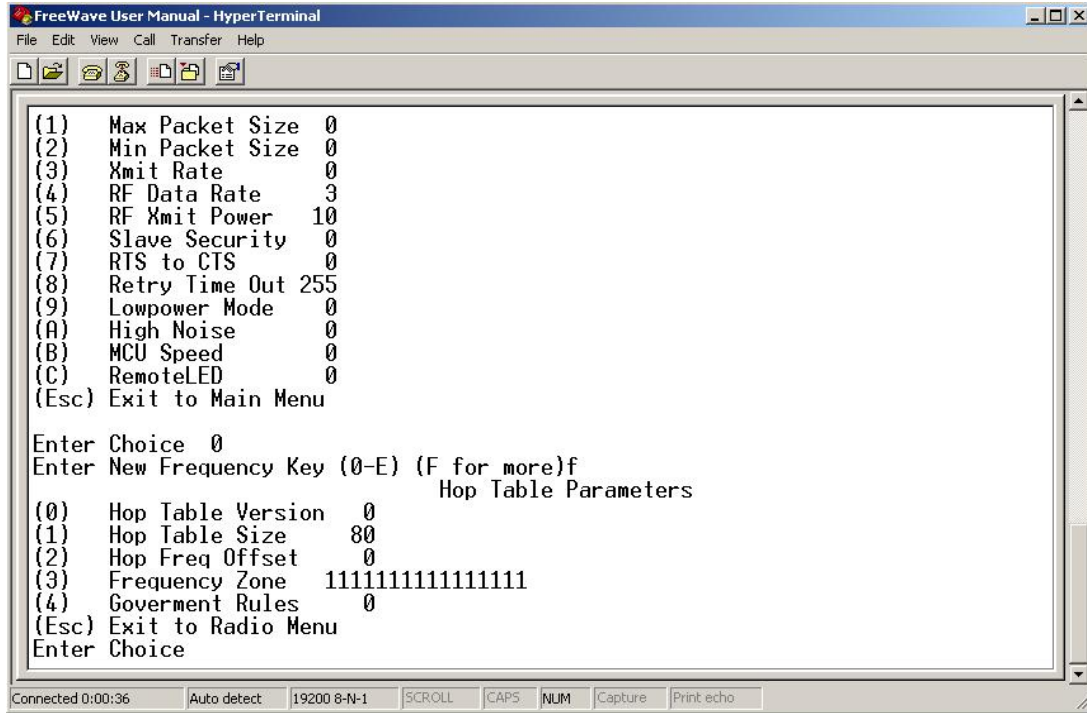


WARNING: FCC regulations require a minimum of 50 separate frequency channels be used within a hop pattern. Using the Standard hop table, a minimum of 7 frequency zones are required for legal communication. Please reference the above table for number of channels per zone to adhere to this requirement.



FREQKEY IN 2.4 GHZ TRANSCEIVERS

The Frequency Key for the 2.4GHz transceivers works very similarly to that of the 900MHz transceivers. The selection of 15 FreqKeys (0-9 and A-E) is identical to the 900MHZ, allowing for 15 different pseudo-random patterns. The difference comes in the Hop Table information.



(0) HOP TABLE VERSION

Entry 0 allows the user to choose the portion of the band in which the transceiver will operate.

Selection	Band
0	Entire band, 2.400 - 2.4835 GHz
1	Entire band, but offset frequencies from selection 0
2	Lower 1/3 rd of band
3	Middle of band
4	Upper one third of the band
5	2 outer 1/3 ^{rds} of band, avoids the middle

(1) HOP TABLE SIZE

The Hop Table Size defines how many separate channels will be used by a given network. For 2.4GHz networks, the Hop Table Size may be set from 50 to 80.

(2) HOP FREQ OFFSET

In the 2.4 GHz Transceivers, Hop Freq Offset allows the user to select an offset of 115.2 KHz, or 230.4 KHz higher than the standard frequency selection. For example, if two networks are operating side by side, with one set to Hop Freq Offset of 0 and the other to Frequency Offset of 1, the frequencies used in the different hopping patterns will be offset by 115.2 KHz.

(3) FREQUENCY ZONE

Frequency Zone allows the user to select which portions of the band the network will use. Setting a zone to 1 will include it in the hopping pattern, while setting the zone to 0 will exclude that zone. Below is the frequency zone table displaying the beginning frequency and ending frequency in each of the 16 zones.

Note: The Hop Table Version must be set to 0 (Entire Band) when using Frequency Zones. If another Hop Table Version were to be selected, the limitations of that selection would be applied to the hopping pattern as well. For example, if Hop Table Version 3 were selected, only the middle of the band would be available in the pattern. Then, if Frequency Zones 5, 6, 7, 8 and 9 were set to 0 no allowable frequencies would be available for the radio to use.

Zone Number	Beginning Freq. (MHz)	Ending Freq. (MHz)	Number of Channels used per Zone
0	2400.3072	2405.4912	5
1	2405.8368	2410.6752	5
2	2411.0208	2415.8592	5
3	2416.2048	2421.0432	5
4	2421.3888	2426.2272	5
5	2426.5728	2431.4112	5
6	2431.7568	2436.5952	5
7	2436.9408	2441.7792	5
8	2442.1248	2446.9632	5
9	2447.3088	2452.1472	5
10	2452.4928	2457.3312	5
11	2457.6768	2462.5152	5
12	2462.8608	2467.6992	5
13	2468.0448	2472.8832	5
14	2473.2288	2478.0672	5
15	2478.4128	2483.2512	5

WARNING: To adhere to the EU specifications, it is necessary to use the proper frequency zone combination based on the frequency offset. While using a frequency offset of zero, the first zone (0) needs to be removed. Using frequency offsets of one or two, the last zone (15) needs to be removed. See table below.

Frequency Offset	Frequency Zone Requirements
0	0xxxxxxxxxxxxxxxx
1	xxxxxxxxxxxxxxxx0
2	xxxxxxxxxxxxxxxx0

(4) GOVERNMENT RULES

This section allows the user to set the transceivers to comply with different government standards. Set the mode to comply with the correct regulations for the area in which the transceiver will be operated. See 2.4GHz Installation Guide for further details.

WARNING: FCC regulations require a minimum of 50 separate frequency channels be used within a hop pattern. Using the Standard hop table, a minimum of 5 frequency zones are required for legal communication.

(1) MAX PACKET SIZE AND (2) MIN PACKET SIZE

The Max and Min Packet Size settings and the RF Data Rate determine the number of bytes in the packets. Throughput can be enhanced when packet sizes are optimized. In Point-to-Point mode, the Max and Min Packet Settings will not have material impact on throughput unless 115.2 KBaud is desired. However, this may have an impact on latency. For example, if small amounts of data are sent and large packet sizes are selected, a certain amount of time “wasted” between each packet would be seen.

The following 3 tables provide the information to determine optimum setting values.

The default settings for Max and Min packet size and RF Data Rate are 8, 9, and 3, respectively.

The following table defines the Minimum packet size in bytes by way of charting the Min Packet Size setting versus the RF Data Rate setting. Using the default settings, the actual minimum packet size, in bytes, is 44.

Minimum Packet Size Definition		
Min Setting	Min Packet Size RF Data Rate = 2	Min Packet Size RF Data Rate = 3
0	15	8
1	21	12
2	26	16
3	31	20
4	37	24
5	42	28
6	47	32
7	53	36
8	58	40
9	63	44

The following table defines the Maximum packet size in bytes by way of charting the Min Packet Size setting versus the Max Packet Size setting where the RF Data Rate is set to 2.

Maximum Packet Size Definition with RF Date Rate of 2										
Min Setting	Max Setting									
	0	1	2	3	4	5	6	7	8	9
0	15	37	58	79	101	122	143	165	186	207
1	21	42	63	85	106	127	149	170	191	213
2	26	47	69	90	111	133	154	175	197	218
3	31	53	74	95	117	138	159	181	202	223
4	37	58	79	101	122	143	165	186	207	229
5	42	63	85	106	127	149	170	191	213	234
6	47	69	90	111	133	154	175	197	218	239
7	53	74	95	117	138	159	181	202	223	245
8	58	79	101	122	143	165	186	207	229	250
9	63	85	106	127	149	170	191	213	234	255

The following table defines the Maximum packet size in bytes by way of charting the Min Packet Size setting versus the Max Packet Size setting where the RF Data Rate is set to 3. Using the default settings, the actual maximum packet size, in bytes, is 172.

Maximum Packet Size Definition with RF Date Rate of 3										
Min Setting	Max Setting									
	0	1	2	3	4	5	6	7	8	9
0	8	24	40	56	72	88	104	120	136	152
1	12	28	44	60	76	92	108	124	140	156
2	16	32	48	64	80	96	112	128	144	160
3	20	36	52	68	84	100	116	132	148	164
4	24	40	56	72	88	104	120	136	152	168
5	28	44	60	76	92	108	124	140	156	172
6	32	48	64	80	96	112	128	144	160	176
7	36	52	68	84	100	116	132	148	164	180
8	40	56	72	88	104	120	136	152	168	184
9	44	60	76	92	108	124	140	156	172	188

Referencing the default settings, the Master will transmit up to 172 bytes on every hop. If fewer than 172 bytes are transmitted, the balance is allocated to the Slave's transmission, plus the quantity in the Min Packet Size Setting.

For example, if a Master transmits 100 bytes, the Slave will then have a total of 116 bytes available (72("leftover bytes") + 44 (Min packet size)).

(3) XMIT RATE

Two settings for the Transmit Rate parameter are available. The setting for normal operation of the transceiver is a Transmit Rate 1. Transmit Rate 0 is useful to qualitatively gauge signal strength in Point to Point mode. When set to Transmit Rate 0, the transceivers will transmit back and forth continuously regardless if they have any actual data. In Point-to-Point operation, Transmit Rate 0 should be used only as a diagnostic tool and not for normal operation. The strength of the signal may be gauged by the Clear to Send LED. A solid red CTS LED indicates a strong signal; a blinking CTS LED indicates a weaker signal.

(4) RF DATA RATE

FreeWave transceivers have two settings for the RF Data Rate (2, 3). RF Data Rate should not be confused with the serial port Baud Rate. Setting 2 should be used when the transceivers are close together and data throughput needs to be optimized. Setting 2 must also be used when the full throughput of 115.2KBaud is necessary. Setting 3 should be used when the transceivers are farther away and a solid data link is preferred over data throughput.

Note: In MultiPoint networks, the RF Data Rate must be set identically in all transceivers. Any transceiver with an RF Data Rate different from the Master will not establish a link.

In Point to Point networks the Master's settings take precedence over the Slave.

(5) RF XMIT POWER

For more information, refer to the Installation Guides for the 900 MHz and 2.4 GHz wireless modems.

(6) SLAVE SECURITY

Slave security is a feature which allows Slave transceivers to accept transmissions from a Master not included in the Call Book. The default setting is 0 (Slave Security enabled) which means, only Masters in the Slaves' Call Book may link to that Slave.

Slave Security may be disabled (setting of 1) allowing any Master to call the Slave. Slave Security has no effect in Point-to-MultiPoint networks where the Network ID is not set to 255.

Slave Security must be set to 1 when the unit is operating in Mode 6 Slave/Master switchable or a Point-to-Point network where the Slave may need to accept calls from more than 10 different Masters. When Slave Security is set to 1, the transceiver will accept calls from any other FreeWave transceiver. Additional network security measures may be taken to prevent unauthorized access, such as changing default settings for FreqKey, Hop Table or Frequency Zones.

(7) RTS TO CTS

Menu selection RTS to CTS in the Radio Parameters menu provides the option of allowing the RTS line on the Master transceiver to control the CTS line of the Slave. This pass-through control can be enabled in both Point-to-Point and Point-to-MultiPoint. In MultiPoint networks, the Master RTS line will control all Slaves' CTS lines. When enabled, the CTS line ceases to function as flow control. It is not recommended to enable this feature when operating at RS-232 speeds above 38.4kB.

The default setting of 0 disables this function, where as a setting of 1 enables RTS-CTS control.

RTS-CTS setting 2 is described in detail in the application note [#5437 DTR to CTS Line Alarm Feature](#).

With an RTS to CTS setting of 1, the Master senses the RTS line prior to all scheduled packet transmissions. If the state has changed, the Master will then transmit a message to the Slave with the new status. This transmission will occur regardless of data being sent. If data is ready to be sent, the RTS status message will be sent in addition to the data. In Point-to-Point mode, the Master will continue sending the new status message until it receives an acknowledgment from the Slave. In MultiPoint mode, the Master will repeat the message the number of times equal to the Master Packet Repeat value in the MultiPoint Parameters menu.

Master transmit times are completely asynchronous to the occurrence of any change of the RTS line; the latency time from RTS to CTS is variable. The Max and Min Packet Size parameters in the Radio Parameter menu determine this duration. Setting both parameters to the maximum value of 9 will produce a maximum latency time of approximately 21 ms, given no Repeaters in the network. At the minimum settings for Max and Min Packet Size (0), the time will be approximately 5.9ms. Please note that this latency can increase significantly if packets are lost between the Master and Slave. In Point-to-MultiPoint mode, no absolute guarantee is made that the state change will be communicated to all Slaves. In Multipoint networks with Repeaters present, the latency will be cumulative for each serial Repeater.

For example: If the latency between the Master and the first Repeater is 15 ms, and 2 serial Repeaters are present, the total latency will be 45 ms. (M—R1 (15 ms) + R1—R2 (15 ms) + R2—S (15 ms) = 45 ms)

Note: The RTS to CTS feature does not function in Point-to-Point networks which contain a Repeater. If this feature is needed in such network, the mode should be changed to Point-to-MultiPoint.

Note: If DTRConnect is enabled and set to 2, the RTS to CTS feature will not work.

Note: If the DTRConnect is enabled and set to 1, RTS to CTS mode takes precedence over the functionality of the CTS line on the Slave relating to the DTRConnect feature.

Note: The RTS to CTS option is only available in RS232 mode.

(8) RETRY TIME OUT

The Retry Time Out parameter in a Slave or Repeater sets the delay the unit will wait before dropping the connection to a Master or Repeater in MultiPoint mode. The factory default is set at the maximum of 255. The maximum setting means that if 1 packet in 255 is sent successfully from the Master to the Slave or Repeater, the link will be maintained. The minimum setting is 8. This allows a Slave or Repeater to drop a connection if less than 1 in 8 consecutive packets is successfully received from the Master.

On the other hand, the function in the Master is effectively the same. With a setting of 255, the Master will allow a Slave or Repeater to stay connected as long as 1 packet in 255 is successfully received at the Master.

The Retry Time Out parameter is useful when a MultiPoint network has a roving Master or Slave(s). As the link gets weaker, a lower setting will allow a poor link to break in search of a stronger one.

Note: Setting Retry Time Out to 20 is recommended in areas where several FreeWave networks exist. This setting will allow Slaves and Repeaters to drop the connection if the link becomes too weak, while at the same time prevent errant disconnects due to interference from neighboring networks.

While intended primarily for MultiPoint networks, the Retry Time Out parameter may also be modified in Point-to-Point networks. However, the value in Point-to-Point mode should not be set to less than 151.

(9) LOWPOWER MODE

The Lowpower Mode feature allows a MultiPoint Slave to consume less power. This is achieved primarily by dimming the transceiver's LED's. When set to 2 through 31, the transceiver will sleep between slots. For example, at a setting of 2 the transceiver sleeps 1 out of 2 slots; at a setting of 3 the transceiver sleeps 2 out of 3 slots, and so on.

The following table shows the changes at different Lowpower Mode settings. The actual current draw depends on many factors. At a setting of 1, power consumption in idle mode will be reduced from ≈ 26 mA to ≈ 12 mA. A low number reduces latency and a high number reduces current consumption.

Setting	Description	Current Draw
0	Lowpower, disabled	
1	LED's dimmed, transceiver remains awake, transceiver is listening to the Master's transmissions on every slot, and transceiver's data port is shut down if the RTS line is de-asserted (low). In this case, the transceiver needs to be awakened before it will be able to send data to the Master.	
2	LED's dimmed, transceiver sleeps every other slot	
3	LED's dimmed, transceiver sleeps 2 of 3 slots	
4-31	LED's dimmed; transceiver sleeps the number of slots corresponding to the setting. For example, with a setting of 31 the transceiver sleeps 30 of 31 slots.	

IMPORTANT NOTES

1. Lowpower Mode is used only in MultiPoint Slaves using serial protocol. Power savings occur only when the Slave is linked. No power savings occur when the Slave is transmitting data. Lowpower Mode is of little value when a Slave has a constant, high throughput. MCUSpeed must be set to '0' and RF Data Rate must be set to '3' for Lowpower Mode to operate properly.
2. Additional power savings may be realized when the Number Repeaters is set to 1.
3. To communicate to an RS232 port of a transceiver that is in Lowpower Mode, the RTS line must be held high to wake it up. The transceiver will wake up within approximately 20 milliseconds of

when RTS goes high. On a board-level radio, the RTS line is located on Pin 7. On an enclosed radio, the RTS line is located on the DB-9 Pin 7.

4. If the RTS line on the Slave is held high, the transceiver will remain in normal operation regardless of the Lowpower Mode setting. Once RTS is dropped the transceiver reverts to the Lowpower Mode.
5. If the transceiver has the DTRConnect option set to 1 or 2 and if the Lowpower Mode enabled (set to 1-31), the RTS line on the transceiver must be asserted for the 'DTRConnect' feature to operate properly.
6. Lowpower mode can be activated on an RS-485 mode radio without changing the wiring. It is possible, however, that data corruption can occur with a Lowpower Mode setting of greater than 1. For this reason, FreeWave Technologies does not recommend a setting greater than 1 with RS-485 or RS-422.

NOTE: A Lowpower Mode setting of greater than "1" *WILL RESULT* in corrupted data in RS-485 or RS-422. Use only a setting of "0" or "1" in these data modes.

(A) HIGH NOISE

The High Noise Option is useful in determining if out of band interference is affecting a radio link. A setting of 1 will provide a reduction of gain in the front end circuit thereby decreasing the affect of any out of band noise. The results will be seen as a lower signal value and a much lower noise value (as found in Radio Statistics or Diagnostics). If the noise is not reduced by a greater amount than the signal, the interference is most likely an in band issue.

When a noise problem is shown to be helped by way of the High Noise option, chances are that the noise may be further squelched by use of a band pass filter available for sale from FreeWave Technologies.

(B) MCU SPEED

MCU Speed controls the speed of the Micro Controller Unit in the transceiver. The default setting is 0 for low speed. A setting of 1 is required for Ethernet and UDP operation.

The following table describes the MCU speed settings.

Setting	Description	Notes
0	Low speed	Reduces current consumption
1	High speed	Required for 230 Kbaud data port rate

(C) REMOTE LED

This setting enables the user to connect Remote LED's through the diagnostics port. This feature is available in firmware versions 2.64 (900MHz) and 3.64 (2.4GHz) or higher.

Setting	Description	Notes
0	Board LED's	Default. Only on board LEDs are enabled.
1	Board and Remote LED's	Onboard LED's are enabled as well as Remote LED's through the Diagnostic port.
2	Remote LED's	On board LED's are disabled. Remote LED's are enabled through the Diagnostic port.

NOTE: When using Remote LED's the center (TX) LED will not turn Green when in Setup mode. This line is not pinned out.

NOTE: This feature may be used to save power in Repeaters. By turning off the on board LED's (setting = 2) the current consumption is reduced. To reduce current consumption in Slaves, use the setting "Low Power = 1". Low Power does not work with Repeaters because they are constantly transmitting. Remote LED drives the Diagnostic port which has a small amount of current draw.

Show Radio Statistics

Radio Statistics in the Main Menu allows the user to view data transmission statistics gathered by the transceiver during the most recent session. This is valuable when the user needs to know the signal strength and noise levels of the link. Statistics are gathered during each data link and are reset when the next link begins. See display below.

The screenshot shows a HyperTerminal window titled 'FreeWave Users Manual - HyperTerminal'. The window displays the following text:

```

Enter Choice
                                MODEM STATISTICS

Master-Slave Distance(m) 0008882

Number of Disconnects      0
Radio Temperature          27
Antenna Reflected Power   1
Transmit Current (mA)     0000
      Local Remote1 Remote2 Remote3
      J dBm   dBm   dBm   dBm
Noise  44 112      57
Signal 96  5      100
Rate %  73      12
000000

Press <Ret> for Freq Table, <Esc> to return to main menu_
  
```

At the bottom of the window, there is a status bar with the following information: Connected 0:00:43, Auto detect, 19200 8-N-1, SCROLL, CAPS, NUM, Capture, Print echo.

NUMBER OF DISCONNECTS

Any time the link between the Master and the Slave is broken and the radios lose Carrier Detect, it is recorded in the Number of Disconnects value. The value indicates the total number of disconnects that have occurred from the time the transceiver is powered on until the radio is put into Setup mode. Under ideal operating conditions, the number of disconnects should be 0. One or more disconnects may indicate a weak link, the presence of severe interference problems or loss of power to any of the radios in the link.

ANTENNA REFLECTED POWER

This is a measurement of the transmitted power that is reflected back into the transceiver from mismatched antennas or cables, or loose connections between the transceiver and antenna. A reading of 0-5 is good; 5-30 is acceptable; 30+ indicates that the connections should be inspected for loose connections and cable quality.

TRANSMIT CURRENT (mA)

This measures the current draw of the transmitter in milliamps. Refer to Transceiver specs for typical values.

AVERAGE NOISE LEVEL

The average noise level indicates the level of background noise and interference at this transceiver and at each of the Repeaters in the link. The number is an average of the noise levels measured at each frequency in the transceiver's frequency hop table. The individual measurement values at each frequency hop channel are shown in the frequency table. Pressing the **Enter** key when the Radio Statistics menu is displayed, accesses the frequency table.

Ideally, noise levels should be below 70 J units and the difference between the average signal level and average noise level should be 26 or more. Noise levels significantly higher than this are an indication of a high level of interference that may degrade the performance of the link. High noise levels can often be mitigated with band pass filters, antenna placement or antenna polarization.

AVERAGE SIGNAL LEVEL

The average signal level indicates the level of received signal at this transceiver and at each of the Repeaters in the link. For each of these, the signal source is the transceiver that transmits to it. The number is an average of the received signal levels measured at each frequency in the transceiver's frequency hop table. The individual measurement values at each frequency hop channel are shown in the frequency table. Pressing the **Enter** key when the Radio Statistics menu is displayed accesses the frequency table. For a reliable link, the margin should be at least 26 J units. Low Average Signal Levels can often be corrected with higher gain antennas, better antenna placement and/or additional Repeaters.

Note: Please consult the install manual for antenna and FCC requirements.

OVERALL RCV RATE (%)

The Overall Receive Rate measures the percentage of data packets that were successfully transmitted from the Master to the Slave on the first attempt. A number of 75 or higher indicates a robust link that will provide very good performance even at high data transmission rates. A number of 15 or lower indicates a weak or marginal link that will provide lower data throughput. An Overall Receive Rate of 100% will provide approximately 100 KBaud of bandwidth with an RF Data Rate setting of 3 and approximately 150 KBaud of bandwidth with an RF Data Rate of 2. These numbers are reduced approximately 50% if one or more Repeaters are in the network.

RADIO TEMPERATURE

The Radio Temperature value is the current operating temperature of the transceiver in degrees Celsius. For proper operation, a FreeWave transceiver must be in the temperature range of -40° to +75° C. Some of the transceivers are only tested to 0° C. See transceiver specification papers for details.

MultiPoint Parameters

When installing MultiPoint networks it is important to do some up front planning. Unlike Point-to-Point networks, a Point-to-MultiPoint network requires several parameters are set consistently on all transceivers in the network. This includes RF data rate, Min and Max Packet Size, and FreqKey.

Note: If several independent MultiPoint networks are to be located in close proximity the planning becomes more critical. In such cases, it becomes very important to include as much frequency and time diversity as possible through use of different FreqKey, Min and Max Packet Size, and Hop Table settings. In some instances the use of the MultiMaster Synch option may be required.

Edit MultiPoint Parameters

Selecting (5) Edit MultiPoint Parameters from the main menu displays the following window:

```

MULTIPOINT PARAMETERS

(0) Number Repeaters      1
(1) Master Packet Repeat  2
(2) Max Slave Retry      9
(3) Retry Odds           9
(4) DTR Connect          0
(5) Repeater Frequency   0
(6) NetWork ID           0001
(7) Reserved
(8) MultiMasterSync      0
(9) 1 PPS Enable/Delay  255
(A) Slave/Repeater       0
(B) Diagnostics          0
(C) SubNet ID            Disabled
(D) Radio ID             Not Set
(E) Local Access         0
(F)
(G) Radio Name           ??????????????????????
(Esc) Exit to Main Menu

Enter Choice _
    
```

(0) NUMBER REPEATERS

In a MultiPoint network it is critical to transmission timing to configure this parameter correctly. The value should be 0 if no Repeaters are in the network and 1 if any number of Repeaters are present. This parameter should be set to the same value in all transceivers in a MultiPoint network. Number Repeaters needs to be set to 1 when running Diagnostics from the Master.

(1) MASTER PACKET REPEAT

In a Point-to-MultiPoint network, Slaves do not acknowledge transmissions from the Master. If Slaves did acknowledge all data transmissions, in a large network, the Master would soon become overwhelmed with acknowledgments from the Slaves. Without acknowledgements, 100% confidence every Slave has received every packet cannot be met. To address this issue, the user may modify the Master Packet Repeat setting, assigning a value between 0 (the packet is transmitted once) to 9 (the packet is transmitted 10 times). For networks with solid RF links, this parameter should be set to a low value such as 1 or 2. If a network has some weak or marginal links it should be set with higher values. If a Slave receives a good packet from a Master more than once it will discard the repeated packets. Similarly, once a MultiPoint Repeater receives a good packet from the Master, it will discard any further repeated packets. In turn, the Repeater will send the packet out to the next Repeater or Slaves the number of times corresponding to its own Master Packet Repeat setting.

Increasing the Master Packet Repeat setting will increase the probability of a packet getting through, but will also increase latency in the network because each packet from the Master or Repeater is being sent multiple times. Therefore, it is important to find the optimal mix between network robustness, throughput, and latency. In general, a setting of 2 to 3 will work well for most well designed networks.

Note: The Master Packet Repeat may be set to 0 if the user software is capable of, or requires acknowledgment. In this case if a packet sent by the Master and not received by the Slave, the user software will control the retries as needed.

MASTER PACKET REPEAT IN MULTIPOINT NETWORKS WITH REPEATERS

The Master Packet Repeat parameter must also be set in MultiPoint Repeaters since a Repeater will appear as a Master to a Slave. Therefore, the Repeater will send the packet out the number of times corresponding to its own Master Packet Repeat parameter. If this parameter is set improperly the reliability of the overall network may be diminished. For example, if a Master's Master Packet Repeat setting is 3, the link between the Master and Repeater should be robust. If the Repeater's Master Packet Repeat is set to 0, this could cause marginal communications between the Repeater and the Slaves. The

Slaves communicating through this Repeater will only receive the initial packet from the Master with no repeats. Therefore, if the packet is not received on the first try, the Slave will not respond as expected.

(2) MAX SLAVE RETRY

The Max Slave Retry setting defines how many times (0 to 9) the Slave will attempt to retransmit a packet to the Master before beginning to use a back-off algorithm (defined by the Retry Odds setting). Slave retries will stop when an acknowledgement is received from the Master.

(3) RETRY ODDS

While packets transmitted from the Master to the Slaves in a MultiPoint network are not acknowledged, packets transmitted from Slaves to the Master are. It is possible, that more than one Slave will attempt to transmit to the Master at the same time. Therefore, it is important that a protocol exists to resolve contention for the Master between Slaves. This is addressed through parameters (2) Max Slave Retry and (3) Retry Odds. Once the Slave has unsuccessfully attempted to transmit the packet the number of times specified in Max Slave Retry, it will attempt to transmit to the Master on a random basis. The Retry Odds parameter determines the probability that the Slave will attempt to retransmit the packet to the Master; a low setting will assign low odds to the Slave attempting to transmit. Conversely, a high setting will assign higher odds. An example of how this parameter might be used would be when considering two different Slaves in a MultiPoint network, one with a strong RF link and the other with a weak RF link to the Master. It may be desirable to assign higher Retry Odds to the Slave with the weaker link to give it a better chance of competing with the closer Slave(s) for the Master's attention.

When Retry Odds = 0, after the Slave has exhausted the number of retries set in the Max Slave Retry parameter and still not gained the Master's attention, the Slave's data buffer will be purged.

(4) DTR CONNECT

With the setting of 0 in the Slave, the transceiver will transmit when RS232 data is received. A setting of 1 will form a Point-to-Point link with the Master when the DTR line is high. With a setting of 2, the transceiver will transmit in bursts. This mode is valuable when a network has many low data rate devices and it is desirable to increase overall network capacity.

Note: If 'DTRConnect' is set to 1 and the 'RTS to CTS' function is enabled on the radio, then 'RTS to CTS' takes precedence over 'DTRConnect'.

Note: If 'DTRConnect' is set to '2' and 'RTS to CTS' is enabled, then 'RTS to CTS' is ignored. The transceiver has two separate transmit and receive user data buffers. For the FGR series radios, these buffers are 2 Kbytes each. In case of a buffer overflow, the transceiver will output unpredictable data.

(5) REPEATER FREQUENCY

Repeater Frequency must be set to a 1 in a Repeater when a FreqKey other than that of the Master is desired. This condition occurs when parallel Repeaters in a network may have overlapping areas of responsibility. The default setting of 0 causes the Repeater to use the FreqKey set in Menu 3.

Note: When Repeater Frequency is set to 0 the FreqKey setting must match the Master or Repeater acting as the Master for the transceiver.

(6) NETWORK ID

Network ID allows MultiPoint networks to be established without using the Call Book. The default setting of 255 enables the Call Book. To enable Network ID the value must be set between 0 and 4095 (excluding 255). Since Network ID does not use serial numbers, MultiPoint Masters and Repeaters may be replaced without reprogramming all of the Slaves in the network. Slaves will link with the first Master or Repeater that it hears that has a matching Network ID. The Network ID function should be used in conjunction with the Subnet ID feature (If necessary).

Without having the serial numbers in the Call Book, a Slave may establish communications with different Masters, though not at the same time. This is very useful in mobile MultiPoint applications.

(8) MULTIMASTER SYNCH

MultiMaster Synch is reserved for applications, in both Point-to-Point and MultiPoint modes, with concentrations of Master units where it is necessary to reduce interference between the Masters. Please contact FreeWave Technologies for more information.

(9) 1 PPS ENABLE/DELAY

The 1 PPS Enable/Delay option allows the radio network to propagate a 1PPS signal from the Master to all Slaves in a MultiPoint network. When this parameter is enabled a properly generated pulse applied on the DTR line of the Master will provide a 1 PPS pulse on the CD line of any Slave in the network. To use the 1 PPS Enable/Delay feature the steps outlined below must be followed:

1PPS Enable/Delay Setup:

1. The 1 PPS Enable/Delay parameter must be set to 0 in the Master.
2. The Master must have a 1 PPS pulse on the DTR pin.
3. The 1 PPS Enable/Delay parameter on the Slaves must be enabled. Slaves are calibrated at the factory.

Calibrating a Slave in 1PPS Enable/Delay mode

1. Trigger an oscilloscope on the 1 PPS pulse on the DTR line of the Master.
2. Monitor the CD line of the Slave.
3. If the timing on the Slave differs from the Master it may be adjusted via the value in the Slave's 1 PPS Enable/Delay parameter. The difference in time between each incremental integer value is 542.534nS. Changing the parameter to higher values decreases the Slave time delay and changing the parameter to lower values increases the time delay.

When properly calibrated the CD line of a Slave radio will output a pulse that goes high for about 2mS in synch with the 1 PPS pulse on the Master radio. The output on the Slave will occur within 20 microseconds of the input to the Master.

Note: When 1 PPS is enabled, the Master **must** have a 1 PPS pulse on its DTR pin, otherwise the RF network will not function.

(A) SLAVE/REPEATER

The Slave/Repeater mode allows a transceiver in a MultiPoint network to switch between Slave and Repeater functions. When in this mode, a transceiver will repeat any packets sent across the network as well as utilize the RS232 port. Thus, where one Repeater and one Slave may be required in another vendor's network, FreeWave networks require only one transceiver. **(This option is not available in Ethernet mode.)**

Note: To operate a transceiver as a MultiPoint Slave/Repeater, the operation mode must be set to (7) MultiPoint Repeater and Slave/Repeater set to 1 in the MultiPoint Parameters menu.

(B) DIAGNOSTICS

This option provides diagnostics data to be viewed at the Master in parallel with application data. The diagnostic program **MUST** be run from the Master transceiver. Diagnostics requires the following:

1. The Number Repeaters set to 1 and Diagnostics set to (1 to 128) in the Master.
2. A second computer or serial connection to run the diagnostics software.

3. A diagnostics cable. (Available from FreeWave Technologies.)
4. Diagnostics software. (Available on the User Manual and System Tools CD.)

For more information on Diagnostics, please contact FreeWave Technical Support at (303) 381-9200.

(C) SUBNET ID

The Subnet ID function only works in MultiPoint Networks utilizing the Network ID option. In a MultiPoint Network, a Slave or Repeater will connect with the first Repeater or Master that it hears with the same Network ID. However, where communications need to be forced to follow a specific path the Subnet ID is quite useful. Subnet ID is particularly helpful to force two Repeaters in the same network to operate in series rather than in parallel, or if desired, to force Slaves to communicate to a specific Repeater for load balancing purposes. Two components exist with regard to the Subnet ID:

1. Rcv Subnet ID. This setting identifies which transceiver a Repeater or Slave will listen to.
2. Xmit Subnet ID. This setting identifies the ID on which this device transmits, and in turn which devices will listen to it. *The Xmit Subnet ID parameter is relevant for MultiPoint Repeaters only.*

The default (disable) setting for both Rcv and Xmit is F.

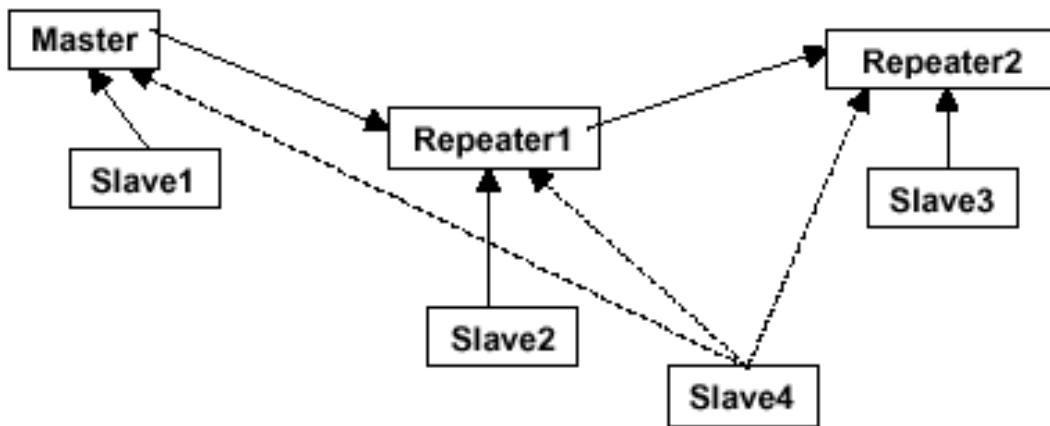
Notes: A Master will always transmit and receive on 0. With firmware of 2.40 and greater (900MHz) or 3.40 and greater (2.4GHz) the Master may be set to use alternate Subnet ID values. Changing these settings on the Master is not recommended, under normal circumstances.

In some MultiPoint Networks, the FreqKey will be at the same setting for all transceivers. In other networks, where parallel Repeaters are introduced, the FreqKey value will need to change. See FreqKey and Repeater Frequency sections earlier in this manual for more information.

If both Rcv Subnet ID and Xmit Subnet ID are set to 0 the Subnet ID will show **Roaming** in the menu. This setting will allow a mobile Slave to roam from subnet to subnet and possibly from network to network.

This drawing depicts a Network in which Subnet IDs are used to force communications. In this example, Repeater1 *must* talk directly to the Master; Repeater2 *must* talk directly to Repeater1. Slaves 1, 2, and 3 are forced along the direction of the solid lines. Slave4 may link to the first Master or Repeater it hears.

The respective Subnet ID diagram and settings are shown below.



Subnet ID Settings

Transceiver	Rcv Subnet ID	Xmit Subnet ID	Other Information
Master	F	F	In firmware levels v2.34 and below, the Master uses 0, 0.
Master	0-F	0-F	In firmware levels v2.40 and above, the Xmit Subnet ID value may be set in the Master. The default settings (F, F) actually use 0, 0. The Rcv Subnet ID on the Master has no affect on the network.
Repeater1	0	1	A 0 will force the transceiver to link only to the Master.
Repeater2	1	2	Rcv SubnetID = 1 forces communication through Repeater1. Repeater1 transmits on SubnetID 1.
Slave1	0	0 or F	Rcv SubnetID = 0 forces communication through Master.
Slave2	1	0 or F	Rcv SubnetID = 1 forces communication through Repeater1.
Slave3	2	0 or F	Rcv SubnetID = 2 forces communication through Repeater2.
Slave4	0	0	The 0, 0 setting allows the Slave to link with the first Master or Repeater it hears with the correct Network ID.

Note: With firmware v2.40 and above, the Subnet ID default is F,F, the radios act as if the Subnet IDs are 0, 0.

(D) RADIO ID

Option (D) allows a transceiver to be designated with an arbitrary, user selectable, 4 digit number which identifies the transceiver in diagnostics mode.

(E) LOCAL ACCESS

Option (E) allows the user to access an FGR or IM series Multi-point slave with a local master. This Master is not the network master. This feature is only available with firmware versions 2.54 (FGR) and 3.54 (IM) or higher. Please see Application note 5457 for more information.

(G) RADIO NAME

Option (G) allows the user to set a unique 20 character Radio name.

Overlapping MultiPoint Networks

Overlapping MultiPoint networks may be set up effectively with FreeWave transceivers when several key parameters are set correctly. Overlapping MultiPoint networks are defined as networks using different Masters which share or overlap in a specific geographic area. It may also include co-located transceivers configured into different networks.

Co-located MultiPoint networks require the following parameters be unique for each network:

- Network ID, unless using Call Book
- Frequency Key (in conjunction with Repeater Frequency)
- Max Packet Size
- Min Packet Size

For more questions about the installation of Point-to-MultiPoint networks, please contact FreeWave Technical Support at (303) 381-9200.

Passwords

Option (8) Change Password in the Main Menu allows the user to set a password that will prevent access to or changing of any of the radio's parameters. This option is useful if it is desirable to prevent unauthorized personnel from gaining access to the radio settings.

Setting a Password

Selecting (8) Chg Password will display the following prompt.

```
New PW? (<esc> to exit)
```

To back out of the process and not enable the password press **Esc**. To set a password, type in **exactly 4 characters**. The process can be canceled, at any point, by pressing the **Esc** key. Once the 4 characters have been entered the following prompt will appear:

```
<Enter> to accept,<esc> to quit
```

To accept the password as entered and enable the feature, press the **Enter** key. The chosen password will be displayed on the line above. The password is case sensitive and every keystroke is a character. To quit the process and not enable the password, press **Esc**.

CHANGING A PASSWORD

Once the password feature has been enabled, it is possible to change to a new password. To enter a new password select, (8) from the Main Menu. At the **Enter Security Code** prompt, enter the current password. Once the password has been entered correctly, the prompt to enter the new password will appear. This is case sensitive and every keystroke is a character. At any point this process may be cancelled by pressing **Esc**.

DISABLING A PASSWORD

The process to disable the password is similar to the process to change the password. However, when prompted to enter the new password the follow the steps below:

1. Hold down the **Alt** key and type **0255**.
2. Release the **Alt** key.
3. Repeat this step 3 more times (hold **Alt** and type **0255** a total of 4 times).

Important Note: If the password feature is enabled and the password is forgotten, the transceiver will need to be returned to FreeWave to have the password disabled.

Time Divisible Multiple Access (TDMA)

Time Divisible Multiple Access (TDMA) allows radios to do various operations on specific time slots. This option is only used for peer-to-peer communications or when applications are very time specific.

For additional information about TDMA, contact FreeWave Technical Support at (303) 381-9200.

Additional Settings

Some additional parameters are not shown in the Setup menu which may be used with FreeWave transceivers. These additional parameters may be set with DOS based software. The most common additional settings used by users are described below.

Low Baud Rates

The transceiver's RS232 baud rate may be set to 300, 600, or 900 baud.

Setup Timeout

When enabled, this mode invokes a timeout feature for the Setup Menu. If the transceiver goes into Setup mode and does not receive legitimate menu selections within 3 to 5 seconds, it will exit Setup and resume its previous mode.

For more information, contact FreeWave Technical Support at (303) 381-9200.

Factory Default Settings

FreeWave serial 900MHz transceivers are shipped from the factory with the following Default Settings:

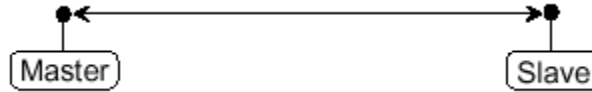
Operation Mode	Default
Point to Point Slave	1
Set Baud Rate	Default
Baud Rate	19200
(A) Data Parity	0
(B) Modbus RTU	0
(C) RS232/485	0
(D) Setup Port	3
(E) TurnOffDelay/OnDelay	0/0
(F) Flow Control	0
(G) Use break to access setup	0
Radio Parameters	Default
(0) FREQ KEY	5
(0) HOP TABLE VERSION	0
(1) HOP TABLE SIZE	112
(2) HOP FREQ OFFSET	0
(3) Frequency Zone	All 1's (Enabled)
(1) MAX PACKET SIZE	8
(2) MIN PACKET SIZE	9
(3) XMT RATE	1
(4) RF DATA RATE	3
(5) RF XMT POWER	10
(6) SLAVE SECURITY	0
(7) RTS TO CTS	0
(8) RETRY TIMEOUT	255
(9) LOWPOWER MODE	0
(A) High Noise	0
(B) MCU Speed	0
(C) Remote LED	0
Ethernet Options:	Default

(0) Ethernet Mode	0
(1) Half/Full Duplex	0
(2) Slave IP Stack	0
(3) Slave UDP Mode	0
(4) IP Address	255.255.255.255
(5) Port Address	65535
(6) IP Address 2	255.255.255.255
(7) Port Address 2	65535
(8) MAC Filter	0
MultiPoint Parameters	Default
(0) NUMBER OF REPEATERS	1
(1) MASTER PACKET REPEAT	2
(2) MAX SLAVE RETRY	9
(3) RETRY ODDS	9
(4) DTR CONNECT	0
(5) REPEATER FREQUENCY	0
(6) NETWORK ID	255
(7) RESERVED	-
(8) MULTI MASTER SYNC	0
(9) 1 PPS ENABLE DELAY	255
(A) SLAVE/REPEATER	0
(B) DIAGNOSTICS	0
(C) SUBNET ID	"Disabled"
Rx ID	F
Tx ID	F
(D) RADIO ID	Not Set
(E) Local Access	0
(G) Radio Name	Blank (?????????)

Examples of Data Communication Links

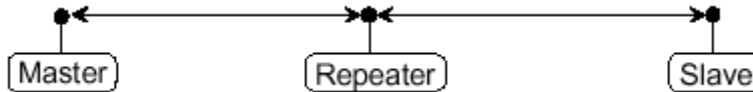
FreeWave transceivers' versatility allows data communication links to be established using a variety of different configurations.

The example below shows the most common and straightforward link; a Master communicating to a Slave in a Point-to-Point link.



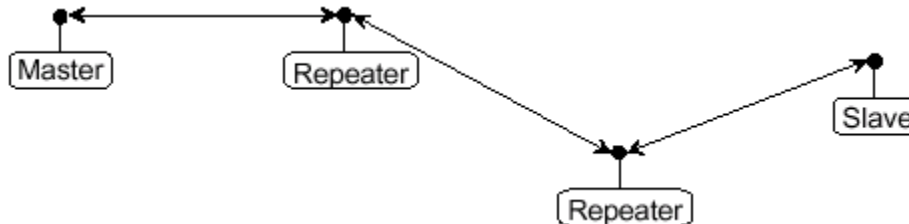
The example below shows how a link might be set up using a Repeater. The Repeater may be located on a hilltop or other elevated structure enhancing the link from the Master to the Slave. In this configuration, it may be desirable to use an external Omni directional antenna at the Repeater. Yagi antennas may be used at both the Master and Slave transceivers.

When a Repeater is used, the RF throughput is cut in half.

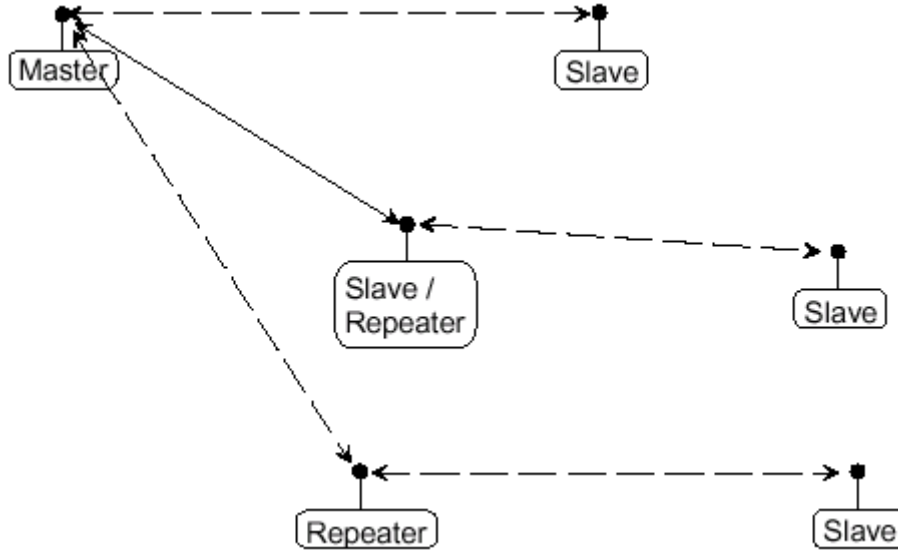


The example below shows a link with two Repeaters between the Master and Slave. With two Repeaters more flexibility in getting around obstacles and greater total range is possible. Once again, it would be desirable to use external Omni directional antennas with the Repeaters, and attaching a Yagi to the Master and Slave to increase the range of the link.

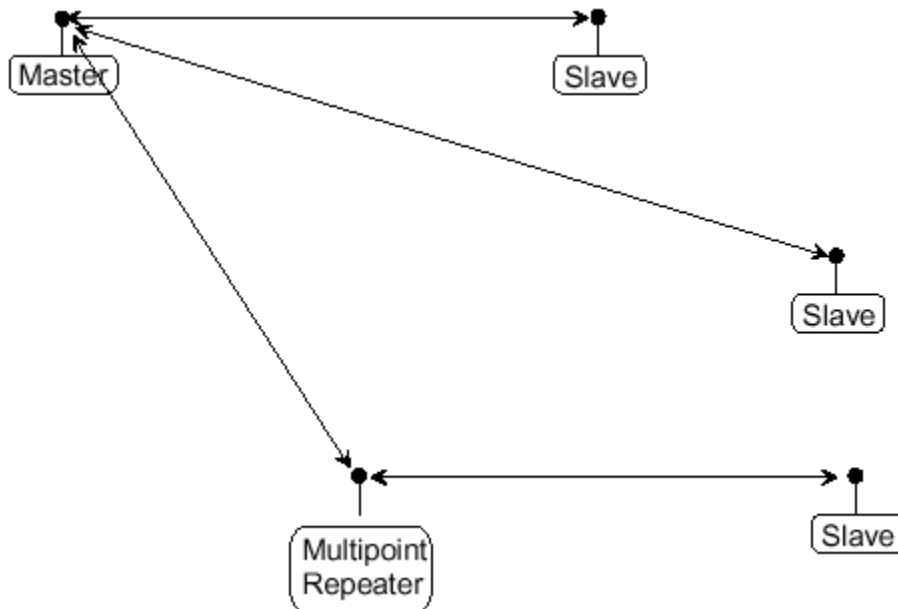
When two Repeaters are used no further degradation in the RF throughput of the link is experienced.



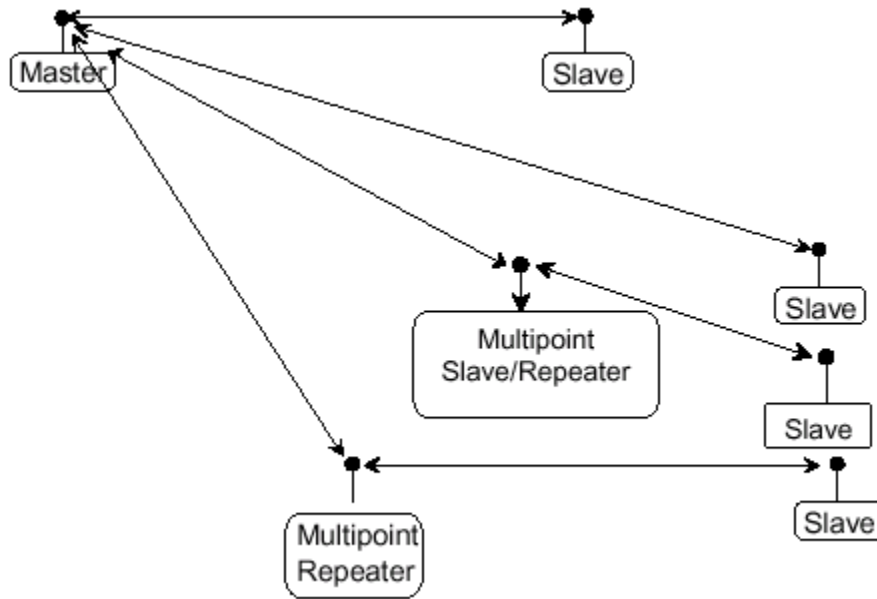
The example below shows a configuration where a Master routinely calls a number of Slaves at different times. The Master is communicating with a transceiver designated as a Slave/Repeater that is connected to a remote device. Since this device is placed in an elevated location, the transceiver may also be used as a Repeater when it is not used as a Slave. At any time the Master may call any of the Slaves, establish a connection, and send and receive data.



The next example depicts a standard Point-to-MultiPoint network. From the Master, any data is broadcast to all three Slaves, one of which receives it through a MultiPoint Repeater. The data is in turn sent out of the serial port of each of the three Slaves. The end device should be configured to interpret the serial message and act on it if necessary.



The last example is a Point-to-MultiPoint network which uses one of the sites as a Slave/Repeater. This network functions in the same manner as a standard MultiPoint network with Repeaters. However, the number of radios may be reduced with the use of the MultiPoint Slave/Repeater feature.



Additional Transceiver information

This section contains additional important information about FreeWave transceivers. The following topics are included in this section:

- Operational RS422 and RS-485 Information
- RS232 Pin Assignments
- FGRO OEM Board Pin Assignments
- FGR-115WC Waterproof Enclosure Pin out for 11-pin Waterproof Cable, part ASC0612WW.

Operational RS-422 and RS-485 Information

For both RS-422 and RS-485, the FreeWave transceiver can drive 32 standard unit loads and loads the bus with only 1/8 unit load. This means the user can tie up to 256 devices on the bus if all of the line receivers have 1/8 unit load.

RS-422 is used for 4-wire or full duplex communication with one Master and multiple Slaves. The FreeWave Master transceiver keeps the line driver asserted at all times. The maximum line length is 4,000 feet using 2, 120 ohm twisted pair cables with a 5th wire for data common.

RS-485 full duplex using 4 wire plus common is the same as RS-422, except the system can have multiple Masters on the bus.

The most common operation of RS-485 is a two-wire comprised of a 120 ohm impedance single twisted pair. In this system the loading of the FreeWave transceiver is as described above which allows up to 256 1/8 unit load units on the bus. Maximum line length is also 4,000 feet with a third wire required for data common. The FreeWave transceiver will check the line to be certain no other device is transmitting before enabling the line driver for data transmission.

When setting the transceiver to RS-485, enable Modbus and set Master Packet Repeat to 3 in the transceiver(s) that will use RS-485. Also set TurnOff Delay to 4.

The TurnOffDelay setting in the menu is used to control the length of time the transmitter driver stays asserted after data transmission has finished. This is needed to allow the last transmitted character to reach the end of a long line and is normally set to one character length of time. This setting also allows 3 complete reflections to the end of the line to ensure the ringing on the line has fully dampened before releasing the bus to another device. Shorter line lengths may use shorter delays, but four one-quarter-character delay times are recommended. In Modbus, a TurnOffDelay setting of 0 will cause internal timing errors.

No provision for hand shaking is made in any of the above modes of operation, so data rates of 57.6 Kbaud and above are not recommended without a protocol that can handle error detection properly.

RS-422 and RS-485 Full Duplex Pin-Outs

Function	Bare Board Pin Number	DB-9 Pin Number
RX+	7	3
RX-	9	7
TX+	5	2
TX-	10	8
Signal Ground	4 or 6	5

RS-485 HALF DUPLEX PIN-OUTS

Function	Bare Board Pin Number	DB-9 Pin Number
Wire to both pins for Bus +	Short 5 and 7	Short 2 and 3
Wire to both pins for Bus -	Short 9 and 10	Short 7 and 8
Signal Ground	4 or 6	5

RS-422 AND RS-485 FULL DUPLEX PIN-OUTS WATERPROOF ENCLOSURE

Function	Bare Board Pin Number	Color
RX+	3	Orange
RX-	7	Violet
TX+	2	Red
TX-	8	Gray
Signal Ground	5	Green

RS-485 HALF DUPLEX PIN-OUTS

Function	Bare Board Pin Number
Bus +	2 and 3
Bus -	7 and 8
Signal Ground	5

RS232 Pin Assignments

Pin		Assignment	Signal	Definition
1	CD	Carrier Detect	Output	Used to show an RF connection between transceivers.
2	TX	Transmit Data	Output	Used to transmit data bits serially from the transceivers to the system device.
3	RX	Receive Data	Input	Used to receive data bits serially from the system device connected to the transceivers.
4	DTR	Data Terminal Ready	Input	Used only in transceivers in Point-to-Point Slave/Master switchable mode or for DTR Connect.
5	GND	Ground		Signal return for all signal lines shared with Pin 9.
6	DSR	Data Set Ready	Output	Always high when the radio is powered from the 2.5mm power connector. Indicated power is on to the radio. Also, this pin can be used for +12Volts when powering the transceivers directly through the RS-232 port. Note: This is not used on the OEM module.
7	RTS	Request to Send	Input	The transceiver does not recognize RTS for flow control. RTS is used as a control line in RTS/CTS mode.
8	CTS	Clear to Send	Output	This signal is used to tell the system device connected to the transceiver that the transceiver is ready to receive data. When asserted, the transceiver will accept data, when de-asserted the transceiver will not accept data. This should always be used for data rates above 38.4KB or a risk of lost data may occur if an RF link is not very robust.
9	GND	Ground		Signal return for all signal lines shared with Pin 5.

FGRO RF Board Pinout

The FGRO Footprint Series transceivers are available in both TTL and RS232 versions.

The TTL versions use reverse polarity from standard RS-232 at 0 to 5 Volt levels. All pin descriptions and pin numbering are the same as the RS232 version. The RS232 versions use standard RS232 polarity and voltage levels for all of the RS232 signal lines (DTR, Transmit Data, Receive Data, Carrier Detect, RTS, and Clear to Send) and TTL standard polarity and voltage level for the Interrupt pin.

Pin 1: B+ Power input.

Pin 2: Interrupt (INT) – Input – A 0 volt level on this pin will switch the radio into Setup mode.

Pin	Assignment	Color on ACS3610xx cable
1	B+ input	Red
2	Interrupt (temporarily ground to invoke menu)	Brown
3	Data Terminal Ready (DTR)	Orange
4	Ground	Black
5	Transmit Data (TXD)	Yellow
6	Ground	Black
7	Receive Data (RXD)	Green
8	Carrier Detect (DCD)	Blue
9	Request to Send (RTS)	Violet (purple)
10	Clear to Send (CTS)	Gray

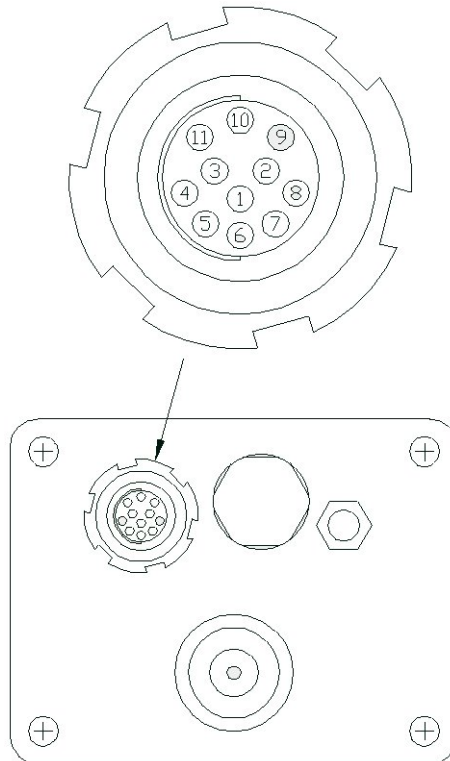
Note: Pin 1 on the FGRO9 board level transceiver is the pin farthest from the three LED's and pin 10 is closest to the LED's.

FGR-115WC Waterproof Enclosure pin out for Cable ASC0613WW

Pin	Color	Function	Signal
1	Brown	Carrier Detect (DCD)	Output
2	Red	Transmit Data (TXD)	Output
3	Orange	Receive Data (RXD)	Input
4	Yellow	Data Terminal Ready (DTR)	Input
5	Green	Ground	Signal ground
6	Blue	Diagnostics TXD	Output
7	Violet	Request to Send (RTS)	Input
8	Gray	Clear to Send (CTS)	Output
9	White, shield	Power ground, shield	Power ground
10	Black	B+	Power input
11	Pink	Diagnostics RXD	Input

The following is the diagram for the waterproof connector pin-out:

Technical Specifications



900 MHz Transceiver Specifications

Specification	
Frequency	902 to 928 MHz
Transmit	
Output Power	5mW to 1W (+30dBm) See RF transmit power settings.
Range	60 miles Line Of Sight, 0 dB antenna gain
Modulation	Spread spectrum GFSK, 120 or 170 Kbps
Spreading method	Frequency hopping
Occupied bandwidth @ 60dB	230 kHz
Channel Spacing	230 kHz
Receive	
Sensitivity	-110dBm at 10 ⁻⁴ bit error rate -108dBm at 10 ⁻⁶ bit error rate
Selectivity	-20 dB at $f_c \pm 115$ kHz -60 dB at $f_c \pm 145$ kHz
System gain	140 dB
Data transmission	
Data rate	115.2 kbps sustained throughput* 57.6 kbps sustained throughput* with Repeaters.
Error detection	32 Bit CRC, retransmit on error
Data encryption	Substitution, dynamic key
Max link throughput	115.2 KBaud
Data interface	RS-232/RS485 1200 Baud to 230.4 KBaud, async, full duplex TTL (RF board level only) Ethernet 10BaseT
Power requirements	
Supply voltage	6 to 30 VDC
Transmit current, for 1 W power at 100% duty cycle	6 VDC: 1 A 12 VDC: 500mA 30 VDC: 200mA
Receive current	6 VDC: 152mA 12 VDC: 86mA 30 VDC: 43mA
Idle current	6 VDC: 40mA 12 VDC: 21mA 30 VDC: 12mA
Sleep current	6 VDC: 8mA 12 VDC: 6mA 30 VDC: 3mA
Operating modes	Point-to-Point Point to-MultiPoint
Operating environment	-40° C- +75° C, 0 to 95% humidity non-condensing

* At 100% receive success rate. RF data rate setting of 2.

	Board Level FGR09xx	Ethernet FGR-115RE	Enclosed FGF-115RC	Water Proof FGR-115WC
Data Port	10-pin PCB connector-- RS232, RS422, RS485 Or TTL Available	Ethernet RJ-45	RS232, RS422, RS485-- DB-9 Diag cable required for RS422, RS485 configuration	RS232, RS422, RS485-- Fischer connector. Diag connector required for RS422, RS485 configuration
Enclosure	Bare board	Extruded aluminum	Extruded aluminum	Extruded aluminum, waterproof
Dimensions	16 mm H x 62 mm W x 123 mm L	57 mm H x 74 mm W x 165 mm L	57 mm H x 74 mm W x 165 mm L	60 mm H x 78 mm W x 165 mm L
Weight	90 grams	441 grams	441 grams	496 grams
Power requirements	<ul style="list-style-type: none"> ▪ 6-30 VDC 	<ul style="list-style-type: none"> ▪ 6-30 VDC ▪ AC wall adapter provided ▪ May be powered through pin 6 of DB9 connector. 	<ul style="list-style-type: none"> ▪ 6-30 VDC ▪ AC wall adapter provided ▪ May be powered through pin 6 of DB9 connector. 	<ul style="list-style-type: none"> ▪ 6-30 VDC ▪ 6 foot data and power pigtail provided ▪ Data/Diag and power cable also available terminated with 2 - DB9's and power jack.
Antenna	SMA female connector. External antenna required.	N type female connector. External antenna required.	N type female connector. External antenna required.	N type female connector. External antenna required.
FCC Identifier	KNY-6231812519	KNY-6231812519	KNY-6231812519	KNY-6231812519
IC Identifier	2329B-DGR09RAS	2329B-DGR09RAS	2329B-DGR09RAS	2329B-DGR09RAS

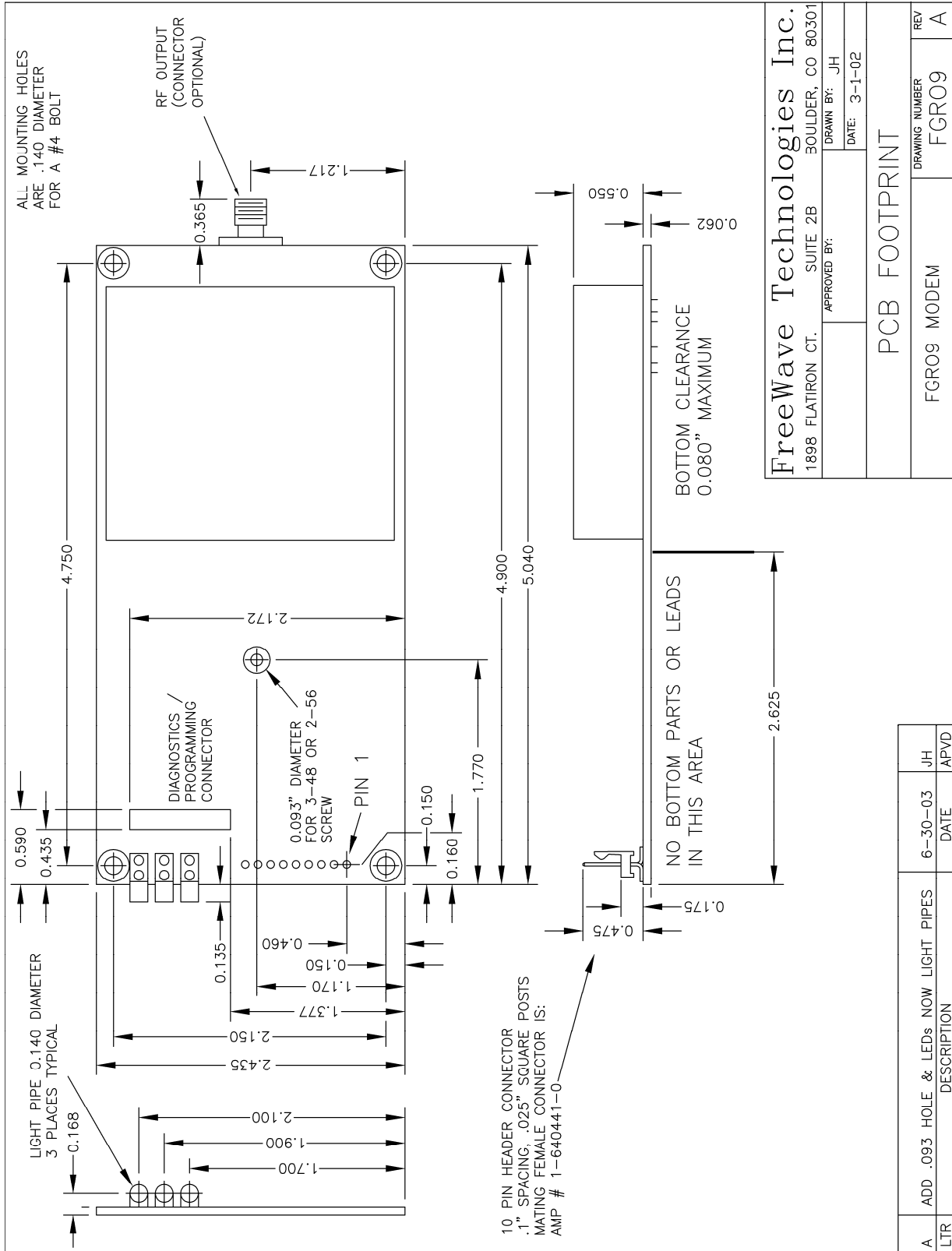
2.4 GHz Transceiver Specifications

Specification	
Frequency	2.400 to 2.4835 GHz
Transmitter	
Output power	0.5mW to 500mW (+27dBm) See RF transmit power settings.
Range	20 miles Line Of Sight with 5dB Omni antenna
Modulation	GFSK, 115.2 or 153.6 Kbps
Occupied bandwidth @ 60dB	230 kHz
Channel Spacing	345.6 kHz
Receiver	
Sensitivity	-107dBm at 10 ⁻⁴ bit error rate -105dBm at 10 ⁻⁶ bit error rate
Selectivity	-20 dB at $f_c \pm 115$ kHz -60 dB at $f_c \pm 145$ kHz
System gain	134 dB
Data transmission	
Error detection	32 Bit CRC, retransmit on error
Data encryption	Substitution, dynamic key
Link throughput	115.2 kbps sustained throughput* 57.6 kbps sustained throughput* with Repeaters.
Data interface	RS-232/RS422/RS485 1200 Baud to 230.4 KBaud, async, full duplex TTL (RF board level only)
Power requirements	
Supply voltage	9.5 – 30 VDC
Transmit current, for 500mW power at 100% duty cycle	410mA at 9.5 VDC 325mA at 12 VDC 130mA at 30 VDC
Receive current	150mA at 9.5 VDC 120mA at 12 VDC 50mA at 30 VDC
Idle current	43mA at 9.5 VDC 34mA at 12 VDC 146mA at 30 VDC
Sleep current	16mA at 9.5 VDC 13mA at 12 VDC 5mA at 30 VDC
Operating modes	Point-to-Point Point to-MultiPoint
Operating environment	-40° C- +75° C, 0 to 95% humidity non-condensing

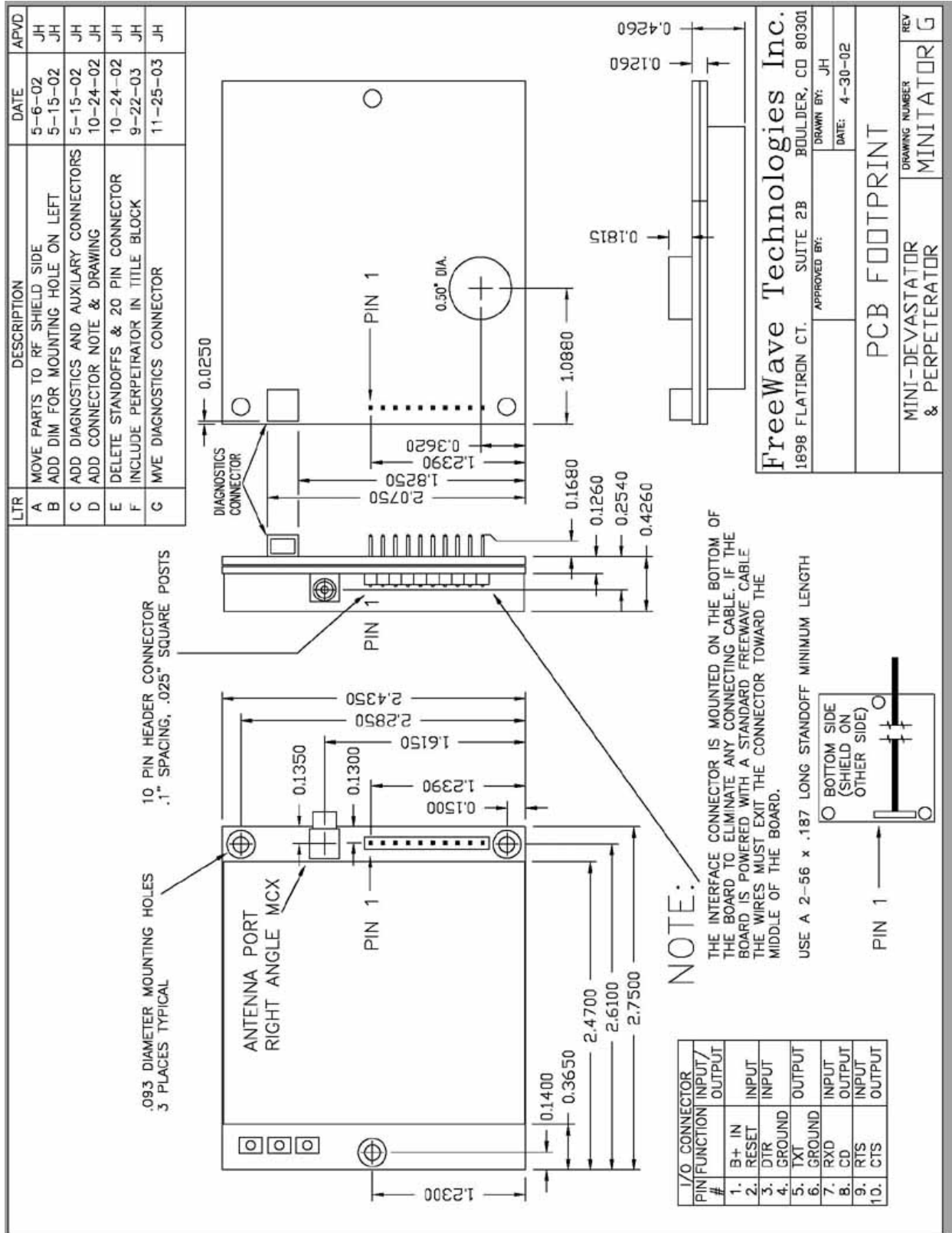
- At 100% receive success rate. RF data rate setting of 2.

	Board Level (IM-5x0X00x)	Enclosed IM-800X009	Water ProofI-900X009
Data Port	10-pin PCB connector RS232, RS422, RS485 Or TTL Available	RS232, RS422, RS485-- DB-9 Diag cable required for RS422, RS485 configuration	RS232, RS422, RS485-- Fischer connector. Diag connector required for RS422, RS485 configuration
Enclosure	Bare board	Extruded aluminum	Extruded aluminum, waterproof
Dimensions	16 mm H x 62 mm W x 128 mm L	57 mm H x 74 mm W x 165 mm L	60 mm H x 74 mm W x 165 mm L
Weight		441 grams	496 grams
Power requirements	<ul style="list-style-type: none"> ▪ 9.5-30 VDC 	<ul style="list-style-type: none"> ▪ 9.5-30 VDC ▪ AC wall adapter provided ▪ May also be powered through pin 6 of DB9 connector. 	<ul style="list-style-type: none"> ▪ 9.5-30 VDC ▪ 6 foot data and power pigtail provided ▪ Data/Diag and power cable also available terminated with 2 - DB9's and power jack.
Antenna	SMA female connector. External antenna required.	N type female connector. External antenna required.	N type female connector. External antenna required.

OEM Full Size Board Level Mechanical Drawing



OEM Mini- Board Level Mechanical Drawing



FGR Errata data

Firmware Version 2.29

Features added:
UDP mode 2 - broadcast UDP.
Point to point diagnostics when calling.

Firmware Version 2.32

Fixes a power current issue

Firmware Version 2.33

Added Modbus for Slave/Repeater

Firmware Version 2.34

Fixed Retry odds issue.

Firmware Version 2.40

Several new features, details were not provided.

Firmware Version 2.44

Fixes a repeater issue

Firmware Version 2.47

Added Vendor ID option

Firmware Version 2.51

Improve UDP
Serial ModBus Diagnostics feature

Firmware Version 2.54

Added Brazil Frequency key

Firmware Version 2.61

Radio Name
"U" fixed in PTT when waiting for PPS
dBm readings in menu 4.
Improved Ethernet bridge lockup prevention
Fix of 2.60 over-the-air upgrade bug

Firmware Version 2.64

Fix of critical bug in Ethernet mode (2.62, 2.63).

FreeWave Technical Support

For up-to-date troubleshooting information check the Support page at www.FreeWave.com.

FreeWave provides Technical Support, Monday through Friday, 8:00 AM to 5:00 PM, Mountain Time (GMT -7) Call toll-free at **1-800-548-5616** or **factory direct after hours at 303-381-9200** or email at moreinfo@FreeWave.com