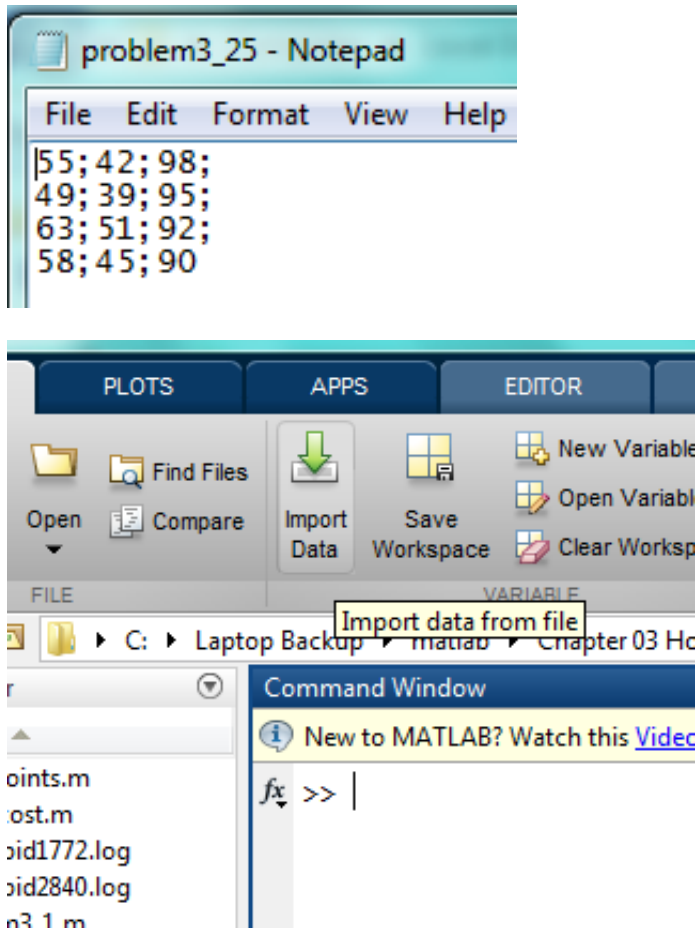
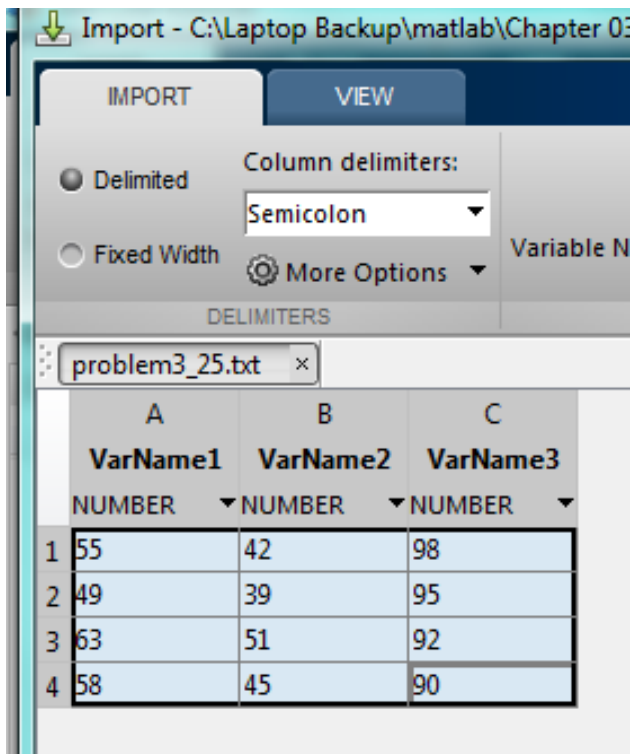
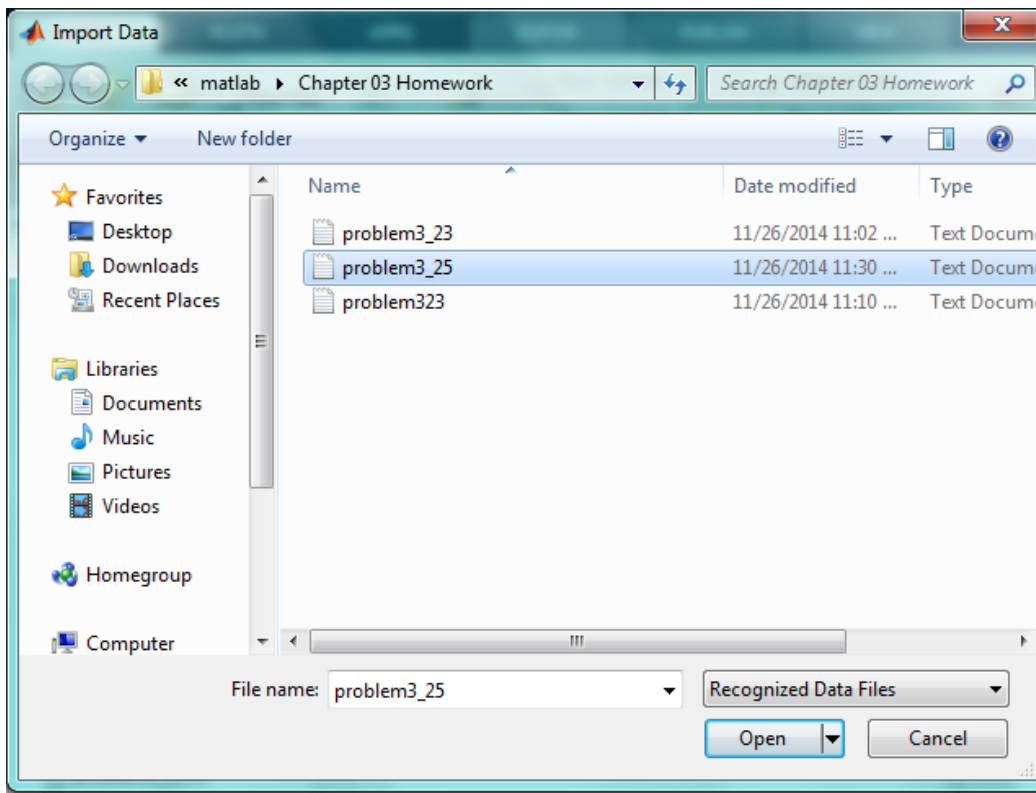


ME 1020 Engineering Programming with MATLAB

Problem 3.25:

25. Use a text editor to create a file from the data given in Problem 23, but separate each number with a semicolon. Then use the Import Wizard to load and save the data in the MATLAB variable A .





```
>> mean(VarName1)
```

```
ans =
```

```
56.2500
```

```
>> mean(VarName2)
```

```
ans =
```

```
44.2500
```

```
>> mean(VarName3)
```

```
ans =
```

```
93.7500
```

```
fx >>
```